



Inside:

- 2 - Deb Bently
- 2 - Blood Drive
- 3 - Hartland Poker Run
- 4 - Obituaries
- 5 - Prevention
- 6 - Sports
- 10 - NRHEG

NRHEG Star Eagle

SERVING THE NEW RICHLAND-HARTLAND-ELLENDALE-GENEVA AREA

No. 16 Vol. CXL \$2 Office in New Richland, Minnesota 56072 Thursday, April 16, 2026



Hartland Poker Run

Name Pennants at New Richland Public Library April 16

Learn simple crafting techniques for creating custom-made name pennants, perfect for decorating your room or locker at the New Richland Library at 4 p.m. Thursday, April 16. For ages 13-18.

Free CERT class April 17-19

Waseca County Emergency Management will be hosting Community Emergency Response Team (CERT) classes April 17-19 for any Waseca County resident who is interested in becoming a member of the CERT team. CERT volunteer members must attend all three days, and will receive free basic safety equipment. If you are interested, contact Denise Wright at 507-835-0694.

Spring Salad Luncheon Hartland Evangelical Lutheran Saturday, April 18

There will be a Spring Salad Luncheon at the Hartland Evangelical Lutheran Church from 11 a.m. through 1 p.m. on Saturday, April 18. Adults \$12, 10 and under \$5. They are located at 404 Broadway St. in Hartland.

Meatball Dinner at Geneva Community Lutheran Church Sunday, April 19

The Community Lutheran Church of Geneva is hosting a Meatball Dinner from 11 a.m. through 1 p.m. on Sunday, April 19. They are located at 106 3rd St. SE. Dine in or to go available.

Meatball Dinner at Trinity Lutheran Church April 19

There will be a to-go Meatball Dinner at the Trinity Lutheran Church from 10:30 a.m. through 1 p.m. Includes 2 large meatballs, carrots, mashed potatoes, green beans and dinner roll. \$12 for adults, \$8 for 1 meatball kids. Located 204 1st St. NW New Richland.

Statewide Republican candidates at the Mill April 21

Mike Lindell, candidate for governor; Wendy Phillips, candidate for secretary of state, and Royce White, candidate for U.S. Senator, are sponsoring an open forum at The Mill beginning at 6 p.m. Tuesday, April 21. Cash food and bar, with Lucia's Cocina food truck. All are welcome. Address is 310 2nd Avenue, Waseca.

New Richland American Legion Auxiliary Meeting April 23

The New Richland American Legion Auxiliary will have their April meeting on Thursday, April 23. This meeting will take place in the New Richland public library at 5:30 pm.

A word from The Word

For the Spirit God gave us does not make us timid, but gives us power, love and self-discipline. 2 Timothy 1:7

Peppers offer 4-H pancake breakfast

By BEN REVERMANN Staff writer

There was a pancake breakfast care of the Waldorf Peppy Peppers 4-H Club at the community center on Sunday, April 12, with free-will donations accepted. They saw over 220 guests come through their doors. Proceeds go directly to the club and help kids go to camp and other club outings. Out in front of the community center were children fighting the wind to uphold the sign alerting drivers passing by outside.

Inside, protected from the wind, people feasted on eggs, sausages and pancakes with all the fixings. The kitchen was full of people serving and stocking food, with others out in the dining area gathering plates and wiping



PANCAKES HERE - On behalf of the Waldorf Peppy Peppers, Jace, Nash, Kaisley, Kenny, Marvin, Kendrick, and Kaeson were struggling against the wind to display a sign to attract passing motorists. They were advertising the group's pancake breakfast at the Waldorf Community Center on Sunday, April 12, 2026.

Star Eagle photo by Ben Revermann

tables. Once they finished eating, children full of syrup ran around amongst the tables, doing what kids do.

Laura Wenzel and Nikki Chicco helped little ones take tickets at the door and keep

track of the head count. Wenzel said, "We're seeing good numbers this morning. A lot of people came out. We're doing really good."

Pancakes continued on 4

County buys squad cars, prepares for construction

By DEB BENTLY Staff Writer

During their April 7 meeting, commissioners approved the purchase of two new squad cars for the Waseca County Sheriff's Department. Sheriff Jay Dulas informed commissioners the needed \$90,000 is in his budget for this year. The new vehicles will be Ford Explorers, the same model as those being retired; the rationale is that having similar vehicles will facilitate transferring equipment, including radios and specialized tools.

Commissioners also acknowledged the receipt of about \$735,000 from the Minnesota Department of Transportation toward the county's "local road improvement program." County engineer Jim Kollar mentioned that the safety improvement work of paving the shoulders along

WASECA COUNTY COMMISSIONERS

County Road 14 will begin April 20.

Board members heard from administrators of the South Country Health Alliance (SCHA) that the organization is in sound financial condition and is closely monitoring decisions being made on the legislative level which may affect the agency's practices. SCHA is a county-based non-profit health plan that provides healthcare coverage for residents enrolled in state health programs, including medical assistance, MinnesotaCare and Medicare Advantage plans. The agency operates in Waseca, Brown, Dodge, Goodhue, Kanabec, Sibley, Steele and Wabasha counties.

During the April 7 meeting, board

members also approved two proclamations.

One named April as "County Government Month." Mentioning that there are more than 3,000 counties across the United States, board chair De Malterer stated that county governments are frequently referred to as an "invisible" layer of public leadership which makes decisions about the welfare of its own citizens while also being asked to carry out initiatives imposed on it by state or federal leaders.

Referring to county employees, Malterer continued, "We greatly appreciate everyone who contributes to the work we accomplish, from day-to-day tasks to coping with emergencies."

County leaders also supported proclaiming April as "Child Abuse Prevention Month," following an

initiative of the National Exchange Club. Board members were wearing blue ribbons, and made it part of the county's proclamation to illuminate the county courthouse in blue throughout the month.

Local Exchange Club president Mikhail Rostislavovich was joined by Timeout Teddy, a mascot of the Exchange Club's prevention program. Rostislavovich stated the lighting and ribbons "publicly affirm the beliefs we hold as a county that we should give a voice to those who may not have the words yet to ask for help." He shared a number of unsettling statistics, including that 80% of children who enter the foster care system with a history of abuse will attempt suicide. Fewer than 1.5 percent of children remanded to foster care go on to build thriving lifestyles.

New county emergency notification system

By DEB BENTLY Staff Writer

Emergency county-wide notifications are now being distributed using ReGroup, a mass notification system which can send messages to hundreds of recipients at once. ReGroup replaces the system formerly in use, "CodeRED." There is no guarantee registrations made with the previous service will transfer to ReGroup.

This means any county residents who wish to receive future information regarding emergencies, threatening weather patterns, public safety notifications and other time-sensitive messages should register their phone numbers with ReGroup. The registration process offers people the opportunity to select what types of notices they would like to receive.

With severe weather season approaching, the county Emergency Management office encourages everyone to register at their earliest opportunity.

https://embeds.regroucloud.com/orgs/WasecaCounty/channels/waseca-county-emergency-notifications/signup_embed>

HARTLAND CITY COUNCIL

Council handles seasonal business

By BEN REVERMANN Staff Writer

During their meeting the evening of Monday, April 6, members of the Hartland city council learned the city's fire department did not have any calls for the month of March. It was also reported that the number one truck, which had been temporarily out of service, is now repaired and fully operational. Jan Kalbow, a concerned Hartland resident, asked about the flushing of the city hydrants and Andy Flatness of Hartland maintenance replied, "We flush them every spring and every fall." He explained a special one-way valve is used while filling the fire trucks in order to pass inspection.

The clerk's office will open April 25 for golf cart (\$10) registration: Pets are also required to be registered. The cost is \$10 for neutered pets and \$30 for non-neutered.

Only one estimate has been received to paint the new city hall. The council would like more estimates before they decide. Currently the wiring is being completed. Installation of sheet rock will follow.

The filter media at the city water plant was replaced. Maintenance worker Flatness observed, "The grass is really coming in out at the ball field, I fertilized and seeded it last fall and have zero complaints."

During general announcements, it was shared that there will be a Spring Salad Luncheon at the Hartland Evangelical Lutheran Church from 11 a.m. through 1 p.m., Saturday, April 18. Adults are \$12, 10 and under \$5. The church is located at 404 Broadway St. in Hartland.



SPRING CLEANING - The New Richland Garden Club's Barb Finseth, Kris Pfeffer, Stacy Bethke and Garden Club President Eleanor Schlaak were getting the garden across from the high school ready for spring on Thursday, April 9, 2026. Said Schlaak, "All our annuals are doing good so far this year." For those interested, the Garden Club will have its plant sale from 9 to 11 a.m. on Saturday, May 16.

Star Eagle photo by Ben Revermann

Garden club anticipates spring

By DEB BENTLY Staff Writer

During their April meeting, members of the New Richland Town and Country Garden Club planned for the upcoming planting season, including scheduling a work session on Thursday, April 9 to remove any remaining plant debris from the flower garden along Highway 30.

Each year, club members work collaboratively with the City of New Richland to plant and main-

tain both that garden and some flower beds located near city hall. Large sized planters displayed along the Broadway business district are maintained by a different group.

Club members are also working toward their yearly spring plant sale, set to take place the morning of May 16 in the New Richland city hall community room. Club member Barb Finseth reported the number of pre-sale orders for "supertunia" plants is among the highest the club has ever received.

Preorders closed on April 11. Numerous other types of plants will also be offered during the sale.

As planning for planting and maintaining the club's gardens continued, members discussed ways they might be able to increase the number of members—or at least to find individuals willing to help with planting and weeding projects.

A member offered to work with city staff to see whether the club might have its own listing on the city web page. Members also

agreed to look into other possibilities and report back at the May meeting.

Those in attendance also discussed ways to improve the appearance of the large garden, proposing that either an interested volunteer or a lawn mowing service might be engaged to reduce undesirable tall plants visible behind the flowers. The plan to arrange the flowers in a way that would be reminiscent of an American flag was also refined.



Fence Lines

by Mark Bernard

You got to speak out against the madness

Another week without snow! The scurs kept the Weather Eye dialed in again. Does Old Man Winter's hiatus continue, or does he poke his head in the door? Starting Thursday, mostly sunny with a slight chance of rain. Highs in the mid-70's with lows in the mid-50's. Partly sunny Friday with a good chance of rain. Highs in the mid-70's with lows in the low 30's. Partly sunny on Saturday with a fair chance of rain and snow showers. Highs in the mid-40's with lows in the low 30's. Sunday, sunny with a slight chance of rain and snow showers. Highs in the upper 40's with lows in the low 30's. Mostly sunny Monday with highs in the upper 50's and lows in the mid-40's. Tuesday, mostly sunny with highs in the upper 60's and lows in the upper 40's. Mostly cloudy on Wednesday with a slight chance of rain. Highs in the mid-60's with lows in the mid-40's. We'll see 13 hours and 30 minutes of daylight on April 16th. On the 17th, sunset will arrive at 8 p.m. CDT. The normal high for April 17th is 56 and the normal low is 35. The scurs will soon be heading to the nearest DQ in their collector automobile.

I'm happy to report that there is already knee-high corn. In Troy Texas, that is, according to one of my spies. Locally, more progress made with the odd report of someone planting, including a field of soybeans. Watching some of the webinars this winter, the actual benefit to the early planting of soybeans probably isn't all it's cracked up to be, gaining perhaps one-third of a bushel per day vs. planting say the last week in April. As we've discussed in years past, the odds of a May frost are not as great perhaps as one thinks, based on weather data at the SROC in Waseca. However, not all fields are created equal. When one of those spring frosts hits, the damage is frequently not evenly distributed across the field. This creates real headaches for anyone trying to evaluate it and determine what the best course of action is. Regardless, it behooves one to move expeditiously before real yield losses occur.

At the ranch, tending flowering plants and pruning fruit trees has been our main focus. Gardening can happen now the tree pruning is done. The spring bulb planting becomes prettier by the day as the temperatures warm and more flowers bloom. There were enough daffodils, so that even after cutting about two-thirds of them, the bed still looks respectable. More hyacinths are coming online, and with the warmer temps, their scent is attracting pollinators daily. All the fruit trees were pruned as of Friday. The aftermath of branches, limbs, suckers and water sprouts were cleaned up in Sunday's wind. The temperature was fine, but the wind wore me out. After five hours' worth of collecting and hauling, it was finished. The peonies and hostas are coming to life, so last year's growth was removed. Ear-

lier I'd taken the last of the bunny guards off the bunny candy. I'm on a roll, so I might live on the edge and take the chains off the tractor. Might even remove the driveway markers if I really want to tempt fate.

There have been several poorly written pieces of legislation proposed recently that have people like me up in arms. Thanks to the vague language, one appeared to restrict the use of collector automobiles to weekends and daylight hours. The author of the bill, rep. Meg Lugar-Nickolai, might've been wise to consult with car clubs before proposing this stinker. Car clubs often attend educational venues open only during the week. We visit care centers on weekdays when activity directors are present. Sometimes we come home in the dark. Our lights work. One thing that doesn't work is a mechanic repairing our cars only on weekends. Fortunately, enough noise was made by individuals and folks like the MSRA that this "solution in search of a problem" never got a hearing. Another bill has been proposed to ban the use of recreational vehicles on township and county roads. Yet another bill on the federal level proposes to disallow the use of live animals for dog training. Time to speak out against the madness.

Wildlife is always part of life at the ranch. Rooster pheasants are numerous and can even be seen in the pasture while the sheep graze nearby. Apparently they don't consider the ovines a threat. I've seen what appeared to be wood ducks flying around the ranch, but on Saturday there was no doubt. There was a drake sitting on the Haralson tree I'd recently pruned. Out of the corner of my eye, I spied three more ducks on top of the old granary. I trained my bird glasses on them and sure enough, there were two hens and another drake. Fortunately, there are two wood duck houses in the wetland area. Our building site is close enough though, so it might be interesting to put up a spare house outside the oval office for our viewing pleasure. Watching wood ducks beats playing on a cell phone any day.

Poppy has made the most of some of the cooler days between the smattering of warmer temps. Even the nice days have had their benefits. Cleaning up the yard really isn't a good time to have Poppy outside if you want to get anything done. She tends to wander off outside the confines of the lawn at times. Her short stature makes her difficult to see. The way traffic moves on our road, a tragedy is something we'd rather avoid. However, when one returns inside and hasn't eaten anything, something quick is in order. You guessed it, popcorn! That makes a small Corgi jump for joy while the microwave produces one of her favorite snacks to share. It's really nice when she lets us eat some too.

See you next week...real good then.

Steele County Free Fair reminder

A reminder from the Steele County Free Fair that May 1, 2026 is the deadline to submit nominations for this year's Steele County Livestock Hall of Fame. Nomination forms are available at the fair office and on-line at www.scff.org.

There are two types of awards. The first type is Hall of Fame membership. Nominees may be an individual or husband/wife team who meet the following criteria: Nominees are judged on their impact or influence upon the livestock industry - county, state, and national, their leadership in the

livestock industry, and other relevant contributions with county being a priority.

The other type of award is the Hall of Fame Service award. These nominees are to be individuals that grew up or live in Steele County and went on to do outstanding work in the livestock industry outside of the county. State and national contributions are the priority for this award.

Inductees into the Livestock Hall of Fame will be recognized on Tuesday, August 18 at 2:30 p.m. in the livestock show arena.



In My Humble Opinion

by Deb Bently

Enjoying sun, snow at the cabin

I spent a couple days at my family's cabin near Park Rapids this past weekend.

Though the cabin was its familiar self—simple, comfortable, and embedded in a natural setting—many elements of the trip made me feel as if I was on an alien planet.

Once my brother and I got north of Motley, we noticed the ground was consistently covered with about three inches of snow. We learned from someone who lives in the area year round that there was a time when the snow was all melted, but a bit over a week ago, five or more inches fell, and had managed to keep its cold grip on the landscape ever since.

Compare that, of course, to the two dozen daffodils blooming along the front of my house.

Heck, not only couldn't we even see the grass on the cabin's lawn, we couldn't get to it. We ended up bogging down on the winding, hilly road that we usually love for its privacy and isolation. The snow itself was an irritation, but given temperatures in the 40s, the least bit of pressure turned the snow into an ice-like surface. Let me just say that, with backing up, taking runs, then backing up again, we probably drove five miles or more even though the road isn't

one mile long.

We ended up parking probably 200 feet away and having to fetch a sled to carry our belongings to the cabin.

I tell you all this not to complain—I feel lucky to have a cabin to visit, regardless of any adversities—but to support my claim about being on another world.

I am happy to report there is still suet in my birdfeeder and the pileated woodpecker came by at least daily for a few bites to eat. It also vastly improved my weekend that, although we could barely get to the cabin on day one, by day two the warmer temperatures had cleared the road enough to allow us to drive right down to our usual parking spot.

The truly surreal experience I want to describe lasted less than half an hour.

The lake, my avid fisherman brother informs me, still has about a foot of ice. It remains solid all the way to shore, so that he can simply step onto it and walk to his favorite spot.

With highs in the 40s and better, he did not need a shelter, but instead made sure the holes were open on his first sojourn, and could then count on them to remain open for the rest of



Deb's brother fishing on the lake near Deb's cabin. The 10-foot-tall line of fog makes him invisible from eye level.

Star Eagle photo by Deb Bently

the weekend. He sauntered out, opened his folding chair as though it were summer, and sat down to fish.

On Sunday, the temperature stretched as high as 65 degrees. With the sun beaming down, he even took off his jacket while fishing.

I was inside the cabin working on tasks for the newspaper, but when I saw him out there on the sunny, icy lake, I decided I was obligated to take a picture. I stepped outside, found an angle high above the lake with a clear view, and very purposely framed a shot which showed him in his chair with a low-lying line of fog just blurring the trunks of the trees behind him.

Photographically speaking, it was an appealing shot.

Then I wondered how the picture would look if I moved to a lower location on the shoreline. I moved maybe 100 feet to a spot where the shore is only a foot or so above the "iceline." I aimed my camera out ac-

ross the lake and discovered my brother had disappeared.

The 10-foot-tall, fuzzy line of fog had somehow taken possession of the lake. I could genuinely see the air in front of me turning opaque. In a matter of seconds, the very atmosphere and landscape (icescape?) had changed.

In addition to feeling isolated and alone, I was amazed. I knew my brother was still out there, blithely waiting for a fish to bite, but there would have been no way to prove it.

Shaking my head in wonder, I walked back toward the cabin.

One hundred feet later, I felt the sun shining on my head. The fog—even the picturesque little 10-foot bank of it—was gone.

As though I had imagined the whole episode, there sat my brother, bathed in sunlight, still watching his bobber. I shook my head again, and decided I was glad to have pictures to prove my story is true.

New Richland Blood Drive April 9



GIVING GOOD - Deacon Bob Yerhot, tended to by Red Cross phlebotomist Megan Andreas, was just one of the many who attended the blood drive at the New Richland City Hall on Thursday, April 9, 2026. According to Diane Smith, organizer, "We collected 30 products with 4 deferred donors, and one first timer."

Star Eagle photo by Ben Revermann

Blooming Prairie library celebrating five decades

On the first weekend in May, 1976, the city of Blooming Prairie celebrated the Grand Opening of their brand new library. Now, 50 years later, the people of Blooming Prairie and their neighbors are invited to come together again to celebrate all the joy and connection the library has brought to the community over the last 50 years.

First is an evening social on Friday, May 1 at the BP Servicemen's Club (210 4th St NE, Blooming Prairie, MN 55917). Doors open at 5:30 p.m. There will be free appetizers and a cash bar available, a chance to peruse history displays, and time to mingle with fellow library lovers. The program is scheduled to start at 6:30 p.m. You'll hear from the new Library Branch Director, Bethany Anderson; the Owatonna Library Director, Mark Blando; and the special guest speaker is national best-selling author, Allen Eskens. THIS IS A TICKETED EVENT. Tickets are FREE and are available at both the Blooming Prairie and Owatonna Public Libraries. Be sure to bring your ticket with you that

night because it will also act as your door prize entry.

Then on Saturday, May 2 everyone is invited to a family picnic from 11 a.m. - 2 p.m. taking place outside behind the library and in B to Z Hardware's open grass lot (341 Main St E, Blooming Prairie, MN 55971). There will be a bounce house, yard games, and food available for purchase from Nel's Diner food truck. You will also have the opportunity to contribute to our commemorative community quilt being made live onsite that day! Drop in for as much or as little of the time as you are able.

More details on both events can be found on the library's website: <https://bloomingprairie.lib.mn.us/50-years-blooming/> These events are funded partially through the Community Collaboration Grant which was made possible by the people of Minnesota through Minnesota's Arts and Cultural Heritage Library Legacy fund, in collaboration with our regional public library system, SELCO.News

NRHEG Star Eagle

SERVING THE NEW RICHLAND-HARTLAND-ELLENDALE-GENEVA AREA and the communities of Waseca, Otisco, Hope, Clarke Grove, Mattawan, Freeborn and Waldorf

PHONE: 507-463-8112

FAX: 507-463-0504, email: steagle@hickorytech.net

USPS No. 382-040, address: 128 North Broadway

Mail: PO Box 248, New Richland, MN 56072

DEADLINES: STAR EAGLE: Noon Monday
GOLDEN LINK: Previous Friday

| | |
|---------------------|---------------------|
| ELI LUTGENS | Publisher/Editor |
| MELANIE PILTINGSRUD | Copy Editor |
| AMELIA ROESLER | Editor |
| DEB BENTLY | Staff Writer |
| JIM LUTGENS | Sports Editor |
| TERESA ROSACKER | Advertising Sales |
| PAYGE ROSACKER | Editorial Assistant |

Contributors: Al Batt, Bob Hanson, Mark Bernard, Mark Domeier, Dick Herfindahl, Barb Mrotz, Brenda Dokken, Judy Tweeten, Rachael Jaegar, Tristan Gehring, Ben Revermann, Payge Rosacker, Darin Reese, Rachel Loverink

SUBSCRIPTION RATES

\$57 Per Year, Waseca, Steele, & Freeborn Counties
\$67 State of Minnesota • \$77 Outside Minnesota

Published every Thursday by EJI Publications, Inc., and Periodical Postage paid at the Post Office at New Richland, Minnesota 56072. Entire contents copyright © 2026 EJI Publications, Inc. and respective authors. Opinions expressed in editorials or letters to the editor are those of the individual authors, and do not necessarily represent those of the Star Eagle or EJI Publications, Inc. Letters may be edited for content or length. POSTMASTER: Send address changes to P.O. Box 248, New Richland, MN 56072-0248



Compostings

by Al Batt

A nice meal for two

ECHOES FROM THE LOAFERS' CLUB MEETING
I'm looking for a nice meal for two.

Taking the wife out for a romantic dinner, huh?

No, I'm looking for a nice meal for two dollars.

DRIVING BY BRUCE'S DRIVE

I have a wonderful neighbor named Bruce. Whenever I pass his drive, thoughts occur to me. April 9 looked like a beautiful day through a window. I had attended a funeral and visited an eye doctor. It proved to be jacket-carrying weather. Not cold enough to wear one. The weather was cool, but I was cool with that. It was windy, but I could put rocks in my pocket if I needed to. I blame the shower I'd taken. That volley of pulsating water had apparently washed away all my good sense. My wife and I headed to watch a grandson play baseball at 5:30. We made it to the game, which turned out to be a second April Fool's Day. The pleasant day became colder and windier, giving us rain to enjoy before it snowed. Graupel (popcorn snow) fell. It's a mix of snow crystals and ice, resembling tiny, soft hail pellets. I felt as if I were on the Endurance during Sir Ernest Shackleton's failed attempt to make the first land crossing of Antarctica. The bleachers were as hard as diamonds. A couple of other grandparents stopped to say hello before leaving early in the game. His parting words were, "We should have stayed in Florida."

Family is what keeps me from wintering in Florida.

AT A LOSS

I looked at the ring finger on my left hand. I'd lost my wedding ring. I'd walked all around the Taylor Center on the campus of Minnesota State—Mankato on a frigid day several years back. I'd lost considerable weight without trying to. My slimmer, cold finger let the ring slip off. I retraced my steps, looking for that ring to no avail. I contacted everyone who might have had a lost ring turned in to them. No luck. I haven't replaced the ring. How could I? It's irreplaceable.

I'VE LEARNED

I asked for a cup of hot black tea. The server said they had English Breakfast and Earl Grey tea. That was an example of a good cup, bad cup.

Farmington is the first official incorporated city in the state of Iowa.

By the time Dorothy made it back to Kansas, Auntie Em had rented her room to a flying monkey starring in a series on Netflix.

If you're too cheap to buy a treadmill, please remember that the grocery store won't let you walk on the checkout conveyor unless you buy something.

I took a statistics course in college and learned quickly what my chances of getting an A were in that class. Slim and none.

Never lend a seed catalog to someone who still uses an out-house.

BAD JOKES DEPARTMENT

I bought a pen that can write underwater. It can also write other words.

What is it called when a banana eats another banana? Cannibananabalism.

My wife said I could be an idiot sometimes. It's nice of her to give me permission.

NATURE NOTES

Red-tailed hawks plopped down on posts and poles. I wonder when a post becomes a pole. The terms are used interchangeably. A post is generally shorter, while a pole often serves as a structural element in buildings or utilities.

I'm sure they'd planned the journey behind crows' doors. I watched five crows fly this way and that way in a meandering flight. "As the crow flies" is used to describe the distance between two points, ignoring roads and obstacles.

Birds teach us to listen by providing a delightful component to learning. I listened to the cheerful and complex warbling of a house finch and its backup singers—chorus frogs. Gophers and moles break through the grass ceiling, and Siberian squill pushes through the fallen leaves and reaches for the sun.

Deer have antlers, not horns. Bucks have antlers to fight with other bucks for dominance. Antlers are football helmets that protect heads during battles. Antlers are shed each year, while horns continue growing. An exception is the North American pronghorn (not an antelope), which has horns it sheds annually. Horns are found on antelope, bison, sheep and other members of the Bovidae family. Deer, elk and moose are part of the Cervidae family. Deer shed their antlers annually, due to hormonal changes and changing photoperiods. Shedding antlers could be a way deer conserve energy, as they're cumbersome and resource-intensive.

THANKS FOR STOPPING BY

"Gratitude is the single most important ingredient to living a successful and fulfilled life."—Jack Canfield. Be kind.

NRHEG winter sport athletes celebrated

By ELI LUTGENS
Publisher/Editor

NRHEG Activities Director Dan Stork opened the 2025-26 Winter Sports Banquet ceremony at 6:30 p.m. the evening of Monday, March 30 in the high school gym in New Richland.

NRHEG winter sports were recognized. Coaches from boys' and girls' basketball, wrestling, and cheerleading all spoke.

Stork recognized co-op sports, including hockey with Waseca.

In total seven senior athletes were recognized: Madison Bogue, Zoie Klimmek, Wyatt Larson, Gabrielle Schlaak, Chloe Stork, Camryn VanMaldeghem and Quinn VanMaldeghem.

Well-deserved awards were handed out during the evening. A sense of gratitude encompassed the room as speakers, coaches and players reflected on their memorable seasons, and for some, entire careers.

The banquet concluded with photos and good conversation among the hundreds of students, parents, family members and coaches in attendance.

Awards Cheerleading

Sweetheart Award - Orianna Degen
Most Valuable Cheerleader - Ariel Anhalt
Most Improved - Aja Hollen
Life Saver Award - Ella Jenö
Rookie Award - Aja Hollen
Captains Awards - Madison Bogue and Ariel Anhalt

Letter winners: Madison Bogue, Orianna Degen, Emily DeLaCruz, Ariel Anhalt, Avary Risckedahl, Autumn BasemanTru Thao, Aja Hollen, Ella Jenö, Ameila McKenna, Maggie Lundak
All-State Honors - Madison Bogue (And All-



AWARDS - NRHEG Girls Basketball seniors, from left, are Camryn VanMaldeghem, Chloe Stork, Gabby Schlaak and Quinn VanMaldeghem.

Conference)

Girls' Basketball

Most Valuable Offense - Camryn VanMaldeghem

Most Valuable Defense - Quinn VanMaldeghem

Rebound Award - Quinn VanMaldeghem

Sparkplug Award - Clara Buendorf

Most Improved Player - Ezra Boerner

Captain Awards - Camryn VanMaldeghem, Quinn VanMaldeghem, Chloe Stork, Gabby Schlaak

All Gopher Conference - Quinn VanMaldeghem, Gabby Schlaak

Letter winners: Gabby Schlaak, Savannah Farr, Ezra Boerner, Chloe Stork, Quinn VanMaldeghem, Emilia Stadheim, Izley Boerner, Kylie Olson, Clara Buendorf, Camryn VanMaldeghem

All-Conference Honors: Camryn VanMaldeghem, Quinn VanMaldeghem, Gabrielle Schlaak

Conference Player of the Year: Camryn VanMaldeghem

Honorable Mention All-Conference: Chloe Stork

Sportsmanship Award: Kylie Olson

Boys' Basketball

Panther Award - Brock Holland

Most Valuable Player - Calvin Nissen

Offensive Player of the Year - Brooks Gilliland

Defensive Player of the Year - Brendan Schmidt

Letter winners: Fynn Baumann, Sean Lassahn, AJ Deen, Brock Holland, Brooks Gilliland, Mack Gilliland, Dominic Olson, Brendan Schmidt, Calvin Nissen.

Honorable Mention All-Conference: Brooks Gilliland

Sportsmanship Award: AJ Deen

Captain Awards - Brooks Gilliland, Brendan Schmidt, AJ Dean, Dominic Olson, Fynn Baumann

Wrestling

Most Valuable Wrestler - Ryan Schlaak

Most Improved Wrestler - Owen Schlaak

Most Team Points - Ryan Schlaak

Most Technical Falls - Owen Schlaak

Most Pins - Ryan Schlaak

Most Wins - Ryan Schlaak Captains - Aidan Schlaak, Cole Hutchens and Harbor Cromwell

All Gopher Conference - Ryan Schlaak and Owen Schlaak

Letter winners: Braxton Arnold, Wyatt Larson, Noah Weller, Eli Hendrickson, Khaiden Madson, Josie Tuft, Wyatt Hendrickson, Dakota Schlaak, Bo Holland, Owen Schlaak, Graham Jacobson, Ryan Schlaak, Chase Johansson, Charlie Tuft

All-Conference Honors: Owen Schlaak, Ryan Schlaak

Honorable Mention All-Conference: Graham Jacobson

Sportsmanship Award: Wyatt Larson

Captains - Ryan Schlaak, Wyatt Larson

Hartland University Poker Run April 11



POKER RUN FUN - Above on the right, Don and Jill Farley were warming up before the Hartland University's Side by Side Poker Run on Saturday, April 11, 2026. Bottom, Eric and Elissa said "Hi," but were itching to get started at the Side by Side Poker Run.

Star Eagle photo by Ben Revermann

Got news?
507-463-8112

Bayview Freeborn
Funeral Home & Crematory Services

"We can cross this bridge together"
bayviewfuneral@gmail.com

507-373-4330 • 1415 Hwy. 13 N. • Albert Lea
Locally Organized, Owned & Operated since 1939

ARCADIAN BANK
MORTGAGE

We can help you take the next steps with confidence!

- New Home Purchase
- Refinancing Options
- New Construction or Remodel Projects

Our Mortgage Team is here to talk through your options and find a solution that works for you!

1452 W. Main St.
Albert Lea MN 56007
www.arcadian.bank

Member FDIC

NMLS 554275

Motorcycle

YEP, WE DO THAT!

AMERICANA
INSURANCE GROUP

"We're the 'A' Team"

Albert Lea (507) 377-2000
Ellendale (507) 684-2314
Wells (507) 801-1100
www.americaininsurance.com

OBITUARIES

Dale Viktora

Dale "Genie" Viktora, age 88, passed away on Thursday, April 9, 2026 at his home in Hollandale. A funeral service will be held on Thursday, April 16 2026 at 11 a.m. at St. Mary's Catholic Church in rural Geneva. A wake was held from 4-7 p.m. at Bayview Freeborn Funeral Home on Wednesday, April 15, 2026. Visitation shall be held for an hour prior to the service. Father Bill Becker will be officiating.

Dale was born on December 5, 1937 to James and Minnie (Belshan) Viktora. He grew up in the Myrtle area and joined the Army in 1954, serving until 1957. He served overseas three times as part of the 101st Airborne. After his tour of service, he married Betty Hahn in Spring Valley, and from their union came six wonderful children. He worked as a tool and die maker for Universal Cooperative and Enderes Tool Company in Albert Lea where he worked until retirement.

Dale was a faithful man and had attended many catholic churches, finally joining the congregation of St. Mary's Catholic church where he stayed for more than 50 years. He was a member of the Knights of Columbus council 4323, the Moose, and the NRA. He was a life member of the American Legion. He served on the St. Mary's church council for 15 years and was a member of the credit union board for six years.

When he wasn't working, Dale often spent his time hobby farming. His other hobbies included listening to polkas and old time country on the radio, polka dancing with his wife, building things out of scrap, and going on fishing trips to Happy Days resort for more than 50 years. Dale volunteered his time



Dale Viktora

to help clean the church yard and cemetery. He also volunteered at the American Legion.

Dale loved his family most of all and would often help his sons around the farm and in the machine shop. Whenever possible, he would join family members to go on fishing and hunting trips together. Someone always included him on their trips.

Dale is survived by his children: Gary (Jolene) Viktora of Ellendale, Jerry (Shelley) Viktora of Ellendale, Debra (Lucas) Luna of Albert Lea, Kevin (Marcy) Viktora of Oakland, Kenneth (Alisa) Viktora of Austin, and Julie (Troy) Olson of Oakland; 23 grandchildren; 37 great grandchildren, with two more on the way; brother Melvin Viktora; sisters-in-law Bonnie Viktora and Barb Hahn; and many nieces and nephews.

He is preceded in death by his wife Betty; parents James and Minnie Viktora; parents-in-law Chester and Erma Hahn; 11 siblings; and a great granddaughter.

Dale dearly loved his family and will be deeply missed.

Maynard Heitner

Maynard G. "Buzz" Heitner, age 99 of Eden Prairie (formerly of Wells), died Wednesday, April 8, 2026 at his home. A funeral service was held on Tuesday, April 14, 2026 at St. Andrew Lutheran Church in Eden Prairie. A visitation was held Wednesday, April 15, 2026 at Nasinec Funeral Home in Wells. Burial was in Rosehill Cemetery in Wells. In lieu of flowers, memorials are preferred to any of the following: St. Andrew Lutheran Church's 50th Anniversary Appeal, Good Shepherd Lutheran Church of Wells, and the Wells Veterans Memorial Fund.

Maynard George Heitner was born in Mankato, MN on January 31, 1927, the son of William and Erna (Scheider) Heitner. At his age of two months, the family, which included daughter Carolyn Charlotte, age 6, moved to Preston, MN where William opened a furniture store as well as providing funeral service to the community.

Maynard was baptized in Mankato and later confirmed at St. Paul Lutheran Church in Preston. He gradu-

ated from Preston High School where he was active in sports, music and drama. In 1948, he graduated from the University of Minnesota, Department of Mortuary Science.

Buzz married his high school sweetheart, Betty Gene Broadwater, July 15, 1951. In 1952, they moved to Wells, MN where they and his parents opened the Heitner Funeral Home. Later, Maynard and Betty purchased his parents share and became the sole owners of the funeral home. Subsequently, they opened funeral homes in Minnesota Lake and Bricelyn, MN.

On December 1, 1986, they sold the three establishments to Stan and Kathy Bruss. Stan had worked with the Heitner Funeral Home for many years prior to his owning.

Maynard had been active in the Wells Community. In his church, Good Shepherd Lutheran, he had served three terms on the church council, had been a Sunday school teacher, a choir member and a member of the new building committee. He was elected to the office of Secretary of the former Minnesota District Brotherhood of the Ameri-

can Lutheran Church.

He was also very active in his professional organizations; he was a past president of the Minnesota Funeral Directors Association (1966-1967) after having served many years on the board. He was elected to serve on the Minnesota State Board of Examiners, Minnesota Dept. of Health and later became a Chairman. He also served on the Conference of Funeral Service Examining Boards of the United States from 1972-1978 and served as their president in the last year of his term.

In Wells, Maynard was a co-founder of the Wells United Fund as well as the Area Veterans Memorial Park.

The memorial park was a dream that he spent four years in development. The park was formally dedicated in 2012. This happened with the work and support of Gordon Hansen, Ila Teskey, Gary Hagen, Gary Kauffmann and Ryan Feist.

In 2012, Buzz and Betty moved to Eden Prairie to be close to their family. While living in Eden Prairie, Buzz remained active at St. Andrew Lutheran Church until his death.



Maynard "Buzz" Heitner

He is survived by two sons, Dr. Jeffrey (Lynne) Heitner of La Quinta, CA, Dr. Judson (Tracy) Heitner of Eden Prairie, MN; grandchildren, Andrew (Emily), Charles (Ali), and Jayne; along with three great-grandchildren, Benjamin, Alice and Griffin. He was preceded in death by his parents, sister Carolyn, and beloved wife Betty Gene.

ZED by Duane M. Abel



www.corkeycomics.com

Waseca 4-H Garage sale donations wanted

WASECA, MN — Waseca County 4-H invites the community to turn their spring cleaning into local impact. Starting May 9, 2026, the organization will begin collecting gently used items for its 15th Annual 4-H Garage Sale, a major fundraiser supporting over 300 local youth members. Donations directly fund essential 4-H programming, including summer camps, educational trips, youth scholarships, and leadership workshops.

Drop-Off Location: Waseca County Fairgrounds (4-H Building) 409 8th Ave NE, Waseca, MN 56093

Collection Times: Saturday, May 9: 9:30 a.m. – 12:30 p.m. and Monday, May 11: 4:30 p.m. – 6:30 p.m.

Accepted Items: 4-H is seeking clean, working items including clothing (all sizes), home décor, kitchenware, toys, books, and fur-

niture such as tables and dressers. Prohibited Items: To manage disposal costs, the organization cannot accept TVs, mattresses, exercise equipment, or baby gear (cribs, car seats, sleepers, or swings). A full donation guide is available at z.umn.edu/Donation-Guide.

"Donating is a win-win for our community," says Amy Nelson, Waseca County 4-H Extension Educator. "It's a chance for residents to clear out their unused items while providing our 4-Hers with the resources they need to thrive and lead."

For questions regarding specific items, contact the Extension Office at 507-835-0600 (M-F, 8:00 a.m. – 4:30 p.m.) or email mnext-waseca@umn.edu.

Details regarding the official sale dates (May 15-17) can be found on the Waseca County 4-H Facebook page.

Pancakes

from Page 1

Natalie Roeker, a member of the Peppy Peppers said, "We have 38 people helping out this morning with 28 youth 4-H members. What we'll do this morning is whatever we bought for breakfast that's left over, we donate to the New Richland Food Shelf. The money raised goes to helping cover the cost of camps our club members are in. Not only that, we also purchase Christmas gifts for the wishing tree and complete Thanksgiving food bags for the NR Food Shelf."

So what's up next for 4-H? Roeker continued, "We'll be decorating a hay bale at the county fair along with our club scrapbook and banner entries." She also wanted to remind everyone, "There'll be no meeting in May due to many families helping out with spring planting."



PEPPY PANCAKES - From left: Landon, Nikki, and Owen Chicos, accompanied by Laura Wenzel, were manning the ticket table at the Waldorf Peppy Peppers Pancake Breakfast at the community center on Sunday, April 12, 2026.

Star Eagle photo by Ben Revermann

Hartland City-Wide Rummage Sale

There will be a city-wide rummage sale in Hartland from 8 a.m.-1 p.m. on Saturday, April 25. Maps available at the city hall/post office the morning of the sale.

Saturday, April 25

REINDAL

507-874-3863 • 507-473-0345

USED BOOKSTORE

507-455-3440
eatonbooks@q.com
Mon-Fri 10-5 Sat 10-3:30
602 North Cedar Ave Owatonna MN 55060

TGWET GREG WILMES EXTERIORS

COMMERCIAL • RESIDENTIAL
NEW CONSTRUCTION • REMODELING

- SHINGLES, STEEL, RUBBER ROOFING
- VINYL, STEEL, & CEMENT BOARD SIDING
- WINDOWS & DOORS: INSULATION, SHEETROCK
- ALL FLOORING: CONCRETE, PATIOS, DECKS
- SEAMLESS GUTTERS & GUTTER PROTECTION SYSTEMS
- CERTAINTED® CLAIMS SPECIALIST

GREG WILMES EXTERIORS LLC
BUILDING CONTRACTOR #BC793885

GREGWILMESROOFING.NET
GREGWILMESROOFING@GMAIL.COM
(507) 202-7070

OIL CHANGE SPECIAL

Marthaler Honda of Albert Lea

HONDA

Cheapest oil change special in town!

\$59.99 for full synthetic with a tire rotation

507-373-2341
2114 E Main St
Albert Lea, MN
marthalerhonda.com

Home of the \$59.99 full synthetic oil change - up to 5 quarts

Advanced Funeral Planning

Andrew Schwarz
Licensed Preplanning Consultant

- It is a sincere act of love.
- It relieves the burden of making arrangements at a most difficult time, enabling family & friends to better support each other's sorrows.
- It provides comfort to the family that final wishes are respected.
- It allows the funeral to focus on the living who are left to deal with their grief and loss.
- It is capable of relieving the financial burden for family members.
- It can make it easier for those we love.

BONNERUP FUNERAL & CREMATION SERVICES
Albert Lea • New Richland • Ellendale
217 West Division Street • New Richland, MN 56072
Phone: (507) 465-8015 • www.BonnerupFuneralService.com

100th Point



Hadley Parpart, daughter of Jeremy and Michele Parpart and a member of the 10U Girls' Waseca Hockey Association, scored her 100th season point on Saturday, Feb. 28, in District 9 tournament play against Cannon River. In a weekend tournament at LeSueur, the Waseca Girls' Blue Jays defeated Minnesota River, Mankato, and Cannon River to become the recipients of the First Place District 9 trophy. The team ended their successful season with a 33-2-1 record. Team members include: Ellie Adams, Ambria Bonnifield, Mylee Bubak, Scarlett Gleason, Jocelyn Guritz, Alice Lewer, Maisy Madsen, Evelyn Nelson, Hadley Parpart, Louisa Rohe, and Joslyn Wiblin. Coaches included Layne Bluhm, Eric Gleason, Jordie Lewer, and Kelvin Nelson.

NRHEG Girls' Flag Football



The Minnesota Vikings hosted a Media Day for all 104 high school girls' flag football programs in Minnesota this year on Monday, April 13, 2026. NRHEG Public Schools posted the event on Facebook saying, "NRHEG will have a varsity and a JV team competing this spring! We were able to bring four players to the event today."

Village clean-up invites community to lend a hand

The History Center of Freeborn County invites community members to take part in a Village Spring Clean-Up on Saturday, April 18 from 9 a.m. to 12 p.m. meeting in the History Center Lobby, located at 1031 Bridge Ave. in Albert Lea.

Volunteers of all ages are encouraged to join in helping refresh and prepare the village grounds for the spring and summer seasons. This is a great opportunity to give back, connect with others, and help

keep the community looking its best.

Participants are asked to bring their own rakes, shovels, and brooms to assist with clean-up efforts.

"This event is a wonderful way for the community to come together and take pride in preserving our shared spaces," organizers said.

For more information, contact: Bob Furland, Director, History Center of Freeborn County, at director@lovehistory.org.

Pinwheels of Possibility: prevention is everyone's job

By Patricia Harrelson, Manager of Child and Family Social Services, Minnesota Prairie County Alliance (MNPrairie)

Every April, pinwheels pop up in front of courthouses, schools, and county buildings across Minnesota, those cheerful blue and silver spirals spinning in the spring breeze. They are small and simple. They are also a declaration: that every child deserves a future bright enough to make something as ordinary as a pinwheel feel like a promise.

This year, Prevent Child Abuse America has chosen Pinwheels of Possibility as the national theme for Child Abuse Prevention Month, and the language matters. Not Pinwheels of Intervention. Not Pinwheels of Consequences. Possibility. The theme asks us to look upstream, before crisis, before a report, before a child is harmed, and ask what we can do differently, earlier, together.

Prevention begins long before a crisis occurs. (Prevent Child Abuse America, 2026.) That is the founda-

tional truth that human services workers have understood for decades and that our systems have been slow to fully embrace. Minnesota has more work to do in building consistent prevention infrastructure, particularly in rural communities.

Those conditions are not mysterious. When families are supported early and communities invest in prevention-focused solutions that reduce stress, strengthen relationships, and partner with parents, children thrive. (Wyoming Children's Trust Fund & Prevent Child Abuse Wyoming, 2026.) Home visiting programs, stable housing, access to mental health care, and economic support keep families from the breaking point. These are not soft extras. They are the architecture of safe child-



Harrelson

hoods.

Right now, many families are navigating rising costs, heightened stress, and widening gaps in support. (Prevent Child Abuse America, 2026.) In rural communities like those across MNPrairie's service area, those gaps can feel like canyons. Transportation barriers, workforce shortages, and stretched local systems mean that families sometimes don't find help until a situation has already become a crisis. Prevention work in these communities requires creativity, persistence, and a genuine commitment to meeting families where they are, not where our program eligibility criteria assume they'll be.

The Pinwheels of Possibility campaign invites a shift in narrative, from blame to collective responsibility, recognizing that strong families are the foundation of strong communities. (Prevent Child Abuse America, 2026.) That shift is not just philosophical. It is practical. When we stop asking, "What is wrong with this family?" and start asking, "What does this family need?" we open doors that a deficit-framing keeps firmly shut. Families are not problems to be managed. They are partners in the work of raising the next generation.

For those of us in human services, this month is a useful moment of re-commitment. Are our systems designed to support families before they're in crisis, or only after? Are we funding prevention with the same seriousness we fund response? Are we listening to families, truly listening, about what would help?

The pinwheel spins because something is moving. In communities that invest in early support, in home visiting, in Family Resource Centers, in economic stability, in relationship-based services, something is moving. Children are safer. Families are stronger.

That's worth more than a pinwheel. But the pinwheel is a good place to start.

LERBERG'S

CAR WASH & COIN LAUNDRY

Full line of cardio, free weights, power racks, dumbbells, barbells, & circuit training machines!

Touchless Wash and Self Serve

FITNESS CENTER & TANNING

24 HOURS **507-684-2471**

118 5th Avenue West
Ellendale, MN 56026

Thursdays on Fountain returns to Albert Lea

The Albert Lea Convention & Visitors Bureau is excited to announce the return of Thursdays on Fountain, the community's beloved summer concert series which brings live music, vibrant energy, and lakeside fun back to Fountain Lake all season long. Running from late May through August, Thursdays on Fountain invites residents and visitors alike to gather each week to

enjoy an exciting lineup of live performances spanning a variety of genres. From high-energy bands to laid-back acoustic sets, this year's series promises something for everyone in one of Albert Lea's most scenic settings. The 2026 entertainment lineup has officially been announced, showcasing a dynamic mix of local favorites and regional talent set to take the stage throughout the summer: May 28 - Vatos Por Vida June 4 - Albert Lea Community Band June 11 - The Holy Rocka Rollaz - Eddie Cochran Weekend Special June 18 - String Vacation June 25 - Matt Hannah July 2 - Mia Lillian Music - July Jamboree Special July 9 - The Quantum Mechanics July 16 - Holly Day - Crazy Days Celebration July 23 - Papa Greezy July 30 - Melissa Schulz Aug. 13 - The Chrome Wheels Band Aug. 20 - Ron & Steve Unplugged Aug. 27 - Eclipse Attendees are encouraged to bring lawn chairs, invite friends and family, and take advantage of everything down-

OLSON EXCAVATING

GPS Controlled
Drain Tile Installation
Open Ditch Clean Cut
Backhoe/Dozer/Skidloader
Concrete And Tree Removal
Rock, Gravel, & Dirt Hauling
Chainsawing & Stump Grinding
Snow Removal & Sanding

Brandon Flatness, Owner » shop 507-845-2440 call 507-383-2008

Anyone can say they can fix it, only we guarantee it...for life!

- Basement Waterproofing
- Foundation Repair
- Crawl Space Repair

SAFE BASEMENTS

Schedule your free inspection:
(844) 839-1112

*Certain terms and conditions apply. Ask your Foundation Specialist for details. Contractor ID BC807773

ELYSIAN, OWATONNA, WASECA & WATERTVILLE

507-451-3080

SteveJamesExcavating.com

Offering Commercial & Residential Services

- Excavation
- Site Development
- Site Utilities
- Basement Digging
- Trucks & Hauling
- Landscape Supplies
- Rock, Sand, Gravel & Dirt
- Demolition
- Water & Waterline Repair
- Jetting, Camera & Locating
- Septic Services
- Snow Plowing

RUSS NELSON MOTOR SHOP

Electric Motor Repair and Replacement

601 Dutton Drive
Ellendale, MN
507-473-0513
russnelson1941@gmail.com

www.mainstreetdentalclinics.com

Main Street Dental Clinics

comfortable dentistry

Less than excited about your visit to the dentist? Relax. It's Main Street Dental.

Rochester
(507) 536-7700
3110 Wellner Dr
NE, Rochester, MN 55906

Mankato
(507) 720-0250
287 St. Andrews Dr
#100, Mankato, MN 56001

Bloomington
(507) 583-2141
405 Main St E.
Bloomington Prairie, MN 55917

Owatonna
(507) 453-1000
1170 E Frontage Rd.
Owatonna, MN 55060

New Richland
(507) 463-0802
132 Broadway Ave
N, New Richland, MN 56072

Softball Panthers start season winning two of three

NRHEG girls top Bethlehem Academy 15-8, Blooming Prairie 16-6 before falling 6-1 at Maple River

The NRHEG High School softball team sustained its first loss at Maple River last Friday in a game that was closer than the 6-0 final score indicates.

The Panthers, who fell to 2-1, surrendered two first-inning runs, then held the Eagles scoreless until the sixth inning, when Maple River strung together six of its 12 hits to score four times.

"We didn't get a win, but I was impressed with our defense," said NRHEG coach Wendy Schultz. "Offensively, it took a little while to get the bats going. We had runners in scoring position a couple innings with one out, but got caught in line-drive double plays."

Brooklyn Sommer and Faith Phillips collected two hits apiece for

the Panthers, with Chloe Stork and Izley Boerner adding one each.

Boerner took the pitching loss, allowing six earned runs on 12 hits, with two strikeouts and two walks.

The Panthers drew four walks and struck out 10 times.

A day earlier, the Panthers won 16-6 in six innings at Blooming Prairie.

Quinn VanMaldeghem led the offense, going 4-for-5 with two doubles, five runs scored, four RBIs and two stolen bases. Stork was 3-for-4 with two runs, three RBIs and two stolen bases, Izley Boerner 3-for-5 with four RBIs, and Kyera Eustice 2-for-4 with two RBIs. Phillips and Olivia Berg added one hit apiece. Ezra Boerner scored four runs.

Izley Boerner went the distance in

"We definitely have some areas to improve on, but I'm proud of the girls' effort and attitude."

— NRHEG coach Wendy Schultz

the circle for the win. She gave up three earned runs on nine hits, with five strikeouts and one walk.

"It was a great team win," said Coach Schultz. "The girls were able to hit the ball pretty well and were aggressive on the base paths using their speed to earn 10 stolen bases. Quinn continued to hit well. Izley continued to be very consistent at the plate. Chloe got hits at key

times. The battery of sisters Izley and Ezra Boerner played well. We definitely have areas to improve on, but I'm proud of the girls' effort and attitude."

The Panthers hosted Bethlehem Academy in their season opener in New Richland April 7 and won 15-8.

Offensive leaders: VanMaldeghem 2-for-4, two triples,



E.Boerner



I.Boerner



Phillips



VanMaldeghem

two runs, two RBIs, two stolen bases; Izley Boerner 2-for-4, two runs; Summer 2-for-4, two runs, two RBIs. Adding one hit each were Ezra Boerner, Berg, Eustice, Phillips, Emelia Stadhien and Stork. Phillips doubled.

Izley Boerner was the winning pitcher, giving up three earned runs

on seven hits through 5 1/3 innings. Sommer finished on the mound.

"This was a total team effort," said Schultz. "The girls got key hits when they needed to and were aggressive on the bases. The conditions were chilly, but it was great to get a game in."

Pitching lifts Panthers past Blue Earth, BP

Wayne outduels former Panther Jared Lee in 8-6 win at Reese Field

By JIM LUTGENS
Sports Editor

Ask any baseball coach or manager about the key to winning games and most of the time they'll talk about pitching.

That's the way it worked for the NRHEG Panthers last week.

The Panthers won twice, shutting down Blue Earth Area 13-0 Friday behind a five-inning no hitter from Brooks Gilliland and defeating visiting Blooming Prairie 8-6 last Tuesday as Owen Wayne prevailed in a pitcher's duel.

Gilliland, who cruised on the mound while striking out eight, was backed by a relentless offense.

"We did not let up on gas pedal, and did everything they was in their control to play our best, and capitalize on the mistakes of BEA," said NRHEG coach Marcus Fischer. "Blue Earth has a young team and they struggled to finding the strike zone."

The Panthers totaled six hits, two each by Mack Gilliland, Sean Lassahn and Brock Holland. Mack Gilliland and Lassahn each had four RBIs, Wayne three, Dakota Schlaak and Brooks Gilliland one each. Mack Gilliland scored three runs.

Wayne struck out 11 batters as the right-hander led NRHEG past Blooming Prairie at Jeff and Carol Field in New Richland. Wayne gave up three hits and four runs over five innings while walking five.

The Awesome Blossoms were the first to get on the board in the first when Carsten Ingvalson singled, scoring one run.

The Panthers jumped back into the lead in the bottom of the first after the Blossoms committed an error, and Mack Gilliland singled down the right field line, each scoring one run.

Blooming Prairie made the score 4-2 in the top of the second after Lukas DenHerder drew a walk, scoring one run, and an error scored two runs.

The Panthers took the lead in the bottom of the fifth on two Blooming

"We know to focus on what we can control during the game, and overall we did enough."

— NRHEG coach Marcus Fischer

Prairie errors.

Former Panther Jared Lee — son of former NRHEG head coach Mark Lee — began the game on the mound for Blooming Prairie. The lefthander gave up five hits and five runs (two earned) over five innings, striking out eight and walking five.

Mack Gilliland, a freshman, earned the save for the Panthers.

"He had a good first appearance for relief on the mound and pitched two innings," said Fischer. "In the seventh, he faced the top of the lineup for Blooming Prairie. He closed the game down."

Wayne and Mack Gilliland had two hits apiece for NRHEG, with one apiece going to Dakota Schlaak, Ryan Schlaak, Lassahn and Brooks Gilliland. Dakota Schlaak and the Gilliland brothers each drove in a run. Wayne scored twice.

The Panthers had patience at the plate, tallying six walks for the game. Sean Lassahn and Schlaak led the team with two free passes each.

Gabe Staloch led Blooming Prairie with two hits in three at-bats from the leadoff position. DenHerder and Ingvalson each drove in one run for Blooming Prairie, which worked the count all day, collecting six walks.

Gabe Staloch led Blooming Prairie with two hits in three at-bats from the leadoff position. DenHerder and Ingvalson each drove in one run for Blooming Prairie.



HOME SWEET HOME — The NRHEG High School baseball team was home at Jeff and Carol Reese Field in New Richland to face Blooming Prairie last week as the Panthers' Owen Wayne outdueled former Panther Jared Lee in an 8-6 victory. Above, coach Marcus Fischer and the Panthers examine the action. Below left, the Panthers' Dakota Schlaak doffs his batter's helmet after scoring NRHEG's second run. Below right, Wayne celebrates after a stand-up double.

Star photos by Jim Lutgens



The Blossoms worked the count all day, collecting six walks.

"A couple of pickoff moves that became errors helped us move on the bases and get some runs," said Coach Fischer. "The boys were determined to have strong at-bats,

attack every opportunity, and would not give up. When we were down a couple of runs, we continued to reset by winning each inning. We know to focus on what we can control during the game, and overall we did enough to be on top at the end of the game."



NRHEG track teams take third at Vieselman Invitational

Jewison, Karl, Wobrock, Schlaak, Riewer, relays finish first for Panthers in true team meet

The NRHEG High School track and field teams both finished third in the Vieselman True Team Invitational at Wells Tuesday, April 7. The meet is named in honor of longtime United South Central and Wells-Easton coach Kent Viesselman.

JWP/WEM took both team titles, the boys winning with 186 points, followed by USC/AC with 164, NRHEG 134, and Blue Earth Area 115.

"Our athletes persevered and gave strong performances under some very uncomfortable conditions."

— NRHEG coach Larry Nydegger

For the girls: JWP/WEM 173.5, Blue Earth Area 161, NRHEG 158.6, USC/AC 69.

First-place Panther boys: Lavon Jewison, high jump, 6-2; Jacob Karl, 800, 2:30.12; 4x100 relay, 50.21

(Gavin Lewison, Quen Meyering, Brendan Schmidt, Colton Conroy).

Also: Schmidt, second, pole vault, 10-0; 4x200 relay, second, 1:48.21 (Hudson Chrz, Lewison, Wyatt Tuttle, Meyering); 4x400 relay, second, 4:33.06 (Finn Baumann, Jack Bartlett, Kasey Jewison, Oliver Froslan).

Finishing first for the NRHEG girls: Juliann Wobrock, 1600, 6:13.6; Gabby Schlaak, 100 hurdles, 18.61; Chloe Riewer, pole vault, 7-0

and long jump, 14-9.

Placing second: Wobrock, 800, 3:02.72; Schlaak, high jump, 4-6; Scarlett Chance, shot put, 29-2.5; 4x200 relay, 2:01.59 (Riewer, Clara Buendorf, Ellie Clark, Peyton Frye); 4x400 relay, 5:34.8 (Sierra Fish, Morgan Studier, Gia Cazares, Violette Botten).

According to NRHEG co-head coach Larry Nydegger, it was not an ideal day to compete.

"This was one of the more miser-

able weather days for a meet that we have had in a long time with the wind chill being in the low 30s," said Nydegger. "But our athletes persevered and gave strong performances under some very uncomfortable conditions. I'm really proud of these kids!"

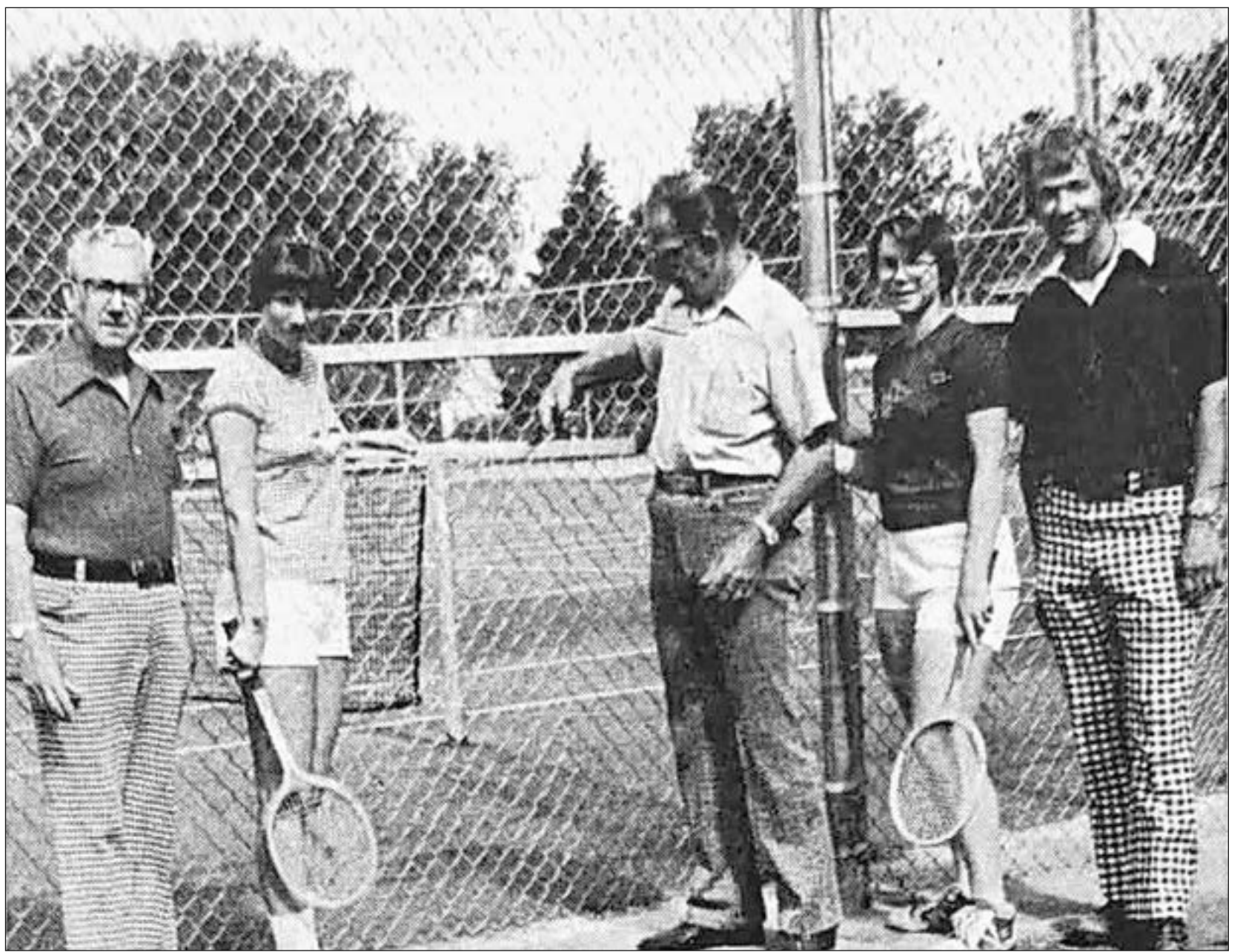
The Panthers' next competition is Tuesday, April 21 at Blooming Prairie.

New Members



The Ellendale Fire Department recently posted on Facebook, "We'd like to congratulate our three newest members as they passed their state certification. Over the last few months they went through firefighter 1, 2 and hazmat training. It's a large commitment that takes a lot of time and practice. We couldn't be more proud of Trent, Colton and Jake! Congratulations, guys!!!"

HERITAGE BITS



"The Ellendale Lions Club tennis courts were dedicated recently and are now being used daily by area residents. The ribbon at the dedication was held by 'Queen of the Courts' Lisa Dunn (second from right) and first runnerup Pam Busho (second from left). Howard Langlie (center) is shown cutting the ribbon, with Lions President M. C. Dronen (left) and Mayor Mark Skroch (right) also present." (4/16/26)

LOMA AZUL
MEXICAN RESTAURANT
34 1st Street SE, Wells, MN
(507) 553-5031
LomaAzulMexicanRestaurantMN.com
Mon, Wed, Thur: 11 am-8 pm
Fri-Sat: 11 am-7 pm, Closed Tue
ORDER ONLINE!

NASINEC
Funeral Home & Crematory
789 Business Park Drive Wells, MN 56097
507-553-3124 • info@nasinec.com

- New in 2022, one-level facility
- On-site crematory
- Pre-need insurance agent
- Dedicated staff including two full-time morticians
- everything you need!

Custom Bean Rolling
STARMAN FARM N!!
Bean rolling reduces combine damage, creates a smoother seedbed to help with plant development and improves harvestability.
\$7/acre 20 miles or less from New Richland/Ellendale
\$8/acre 20 miles or more from New Richland/Ellendale
Call or Text: Tom Starman (507) 475-1498

Polka Party returns to Edgewater Bay Pavilion

Get ready to dance, socialize, and celebrate as the Annual Polka Party returns to the Edgewater Bay Pavilion on Thursday, April 16, 2026. This free event will take place at the same lively time as in previous years, bringing together community members for an afternoon filled with music, fun, and connection. Activities also include polka themed crosswords and word-searches. Coffee, cake and sweets will be provided.

Attendees will once again enjoy the energetic sounds of the Dan Stursa Band, a local favorite known for keeping the dance floor full with classic polka tunes and crowd-pleasing per-

formances. This event is free and open to the public! This beloved community event continues to provide a welcoming space for seniors and polka enthusiasts alike to gather, stay active, and enjoy great entertainment in a beautiful lakeside setting.

Event Details:
Date: Thursday, April 16, 2026
Time: 1 p.m. - 4 p.m.

Location: Edgewater Bay Pavilion (Entrance: Please enter through Highway 13)

The event is made possible thanks to the generous support of this year's sponsors:

Oak Park Place, St. Johns Lutheran Community, Thorncrest Senior Living and Bonnerup Fu-



The annual Polka Party at Edgewater Bay Pavilion brings together community for an afternoon of music, fun, and connection.

neral Home.

Whether you're a longtime polka fan or just looking for a fun and uplifting way to spend

the day, the Polka Party promises an unforgettable experience filled with music, laughter, and community spirit.

The story behind a classic movie theater icon

The History Center of Freeborn County will host a special documentary screening and presentation by Emmy Award-winning filmmaker Justin Atkinson on Thursday, April 16 at 7 p.m. at the History Center, 1031 Bridge Ave., Albert Lea.

Atkinson will present his documentary "Let's All Go to the

Lobby," which explores the fascinating history of Filmack Studios—the company behind the iconic concession stand advertisement that has welcomed moviegoers for generations. More than just a catchy jingle, the film uncovers the story behind one of cinema's most recognizable pieces of theater

advertising.

The documentary highlights how movie theaters have long served as gathering places where people share experiences, create memories, and connect with their communities.

The event will take place at the History Center of Freeborn County, located at 1031 Bridge

Ave. Admission is free for members of the History Center and \$5 for non-members.

For more information, contact: Bob Furland, Director, History Center of Freeborn County at director@lovehistory.org.

More information about the filmmaker is available at justinfilmsllc.com.

BC739881

ALBERT LEA ROOFING
SIDING | WINDOWS | DOORS | GUTTERS
A Division of Local Roofing, LLC
Exteriors... It's what we do!
507-391-3108
www.AlbertLeaRoofing.com

MCAN
Minnesota Classified Advertising Network

BUSINESS OPPORTUNITY
LOOKING FOR HELP
investor or silent partner for a business opportunity. Call 218/457-0976. Just call no text

WANTED TO BUY
WANTED:
ALL 1970S MOTORCYCLES
Running or not. Titled or not. Will pick up. Cash in exchange. Sell now before prices fall. Call Dan at 612/720-2142

MISCELLANEOUS
SAFE STEP
North America's #1 Walk-In Tub. Comprehensive lifetime warranty. Top-of-the-line installation and service. Now featuring our FREE shower package and \$1,600 off for a limited time! Call today! Financing available. Call Safe Step 833/966-3882

WE BUY HOUSES
for cash AS IS! No repairs. No fuss. Any condition. Easy three step process: Call, get cash offer and get paid. Get your fair cash offer today by calling Liz Buys Houses: 844/978-0683

MISCELLANEOUS
SATellite TV + INTERNET!
Get Dish! Free install, free HD-DVR upgrade, 80,000 on-demand movies, plus limited time up to \$600 in gift cards. Call today! 855/562-4309

CHOOSE EARTHLINK FIBER
Internet for speeds up to 5 Gigs, no data caps, no throttling. Prices starting at \$54.95. Plus, a \$100 gift card when you make the switch. Call 844/453-6983

GET A BREAK ON YOUR TAXES!
Donate your car, truck, or SUV to assist the blind and visually impaired. Arrange a swift, no-cost vehicle pickup and secure a generous tax credit for 2025. Call Heritage for the Blind Today at 844/220-9501 today!

DON'T LET THE STAIRS LIMIT YOUR MOBILITY!
Discover the ideal solution for anyone who struggles on the stairs, is concerned about a fall or wants to regain access to their entire home. Call AmeriGlide today! 866/852-5506

Classified Advertising That is EASY
The Minnesota Classified Advertising Network
Make an impact with your advertising dollar with classified advertising that reaches over 1MILLION READERS
Your newspaper representative can provide complete details or you can call MNA: 612/332-8844



Woods and Water

by Dick Herfindahl
Outdoors Writer

Funny how things change over the years

I am looking forward to the spring like we used to have when I was kid. Now, it seems like whenever we have warmer weather, we have gale-like winds to go along with the warm weather. If I remember right, March and April were usually kite months. If you were a little kid flying a kite in this wind, it would be hard to tell where you would end up.

When I was younger with a family at home, I would look forward to going up north for a week of camping and fishing. Now I look forward to going to the cabin, but I still miss those days of camping. I know camping is not as economical as it once was, but it is still cheaper than renting a cabin. I am pretty much past the tenting stage. That little kid in me still would like to spend a night on one of the free campsites on Spider Lake. I think that my body could stand up for a night or two under the right conditions. In a perfect world, it would be a slight breeze, temperatures in the high 60's to low 70's, cooling off to the high 50's at night and, as

long as I am dreaming - no mosquitoes.

If I am going to tent, I should probably buy a cot because by sleeping on the hard ground, by morning my body would probably feel like rigor mortis had set in.

Until next time: It is funny how when we are young our dreams are pretty much endless. As a kid I would mow lawns with my uncle, help bale hay and do whatever it took to make a little money. Even as young adults we feel like anything is within our reach. Then as we get older, our kids are grown and living their own lives, having babies, giving us grandchildren and now great grandchildren.

I feel blessed to be able to still be here to enjoy all of this, because to me, family is what life is really all about.

Please take the time to remember our troops that are serving now and those that have served before them. They are the reason that we have all of the Freedoms that we enjoy today.



Shown here are pictures of my grandsons, Trevor and Grant, cleaning some fish, and another of Trevor and Dylan cleaning fish late at night.

Attend the Church of your Choice!

ST. PETER EVANGELICAL LUTHERAN CHURCH
New Richland, Minnesota
Rev. Scott Williams, Pastor
Sunday - 9 a.m. Sunday School, Choir and Choir; 10:30 a.m. Worship
Wednesday - 5:15 p.m. Supper; 6 p.m. Bible Study

ST. PETER EVANGELICAL LUTHERAN CHURCH
Otisco, Minnesota
Rev. Scott Williams, Pastor
Sunday - 8:45 a.m. Worship

TRINITY EVANGELICAL LUTHERAN CHURCH
New Richland, Minnesota
Interim Pastor
Trish Reedstrom
Sunday - 9 a.m. Sunday Worship, Sunday School; 10 a.m. Coffee
Monday - 9 a.m. Quilting
Wednesday - 6:15 p.m. Confirmation; 7 p.m. Council meeting (first Wednesday)

LESEUR RIVER LUTHERAN CHURCH
New Richland, Minnesota
Pastor Dan Kordahl
Sunday - 9 a.m. Worship; 9:30 a.m. Sunday School
Tuesday - 8:30 a.m. Quilting

VISTA LUTHERAN CHURCH
New Richland, Minnesota
Pastor Dan Kordahl
Sunday - 10:30 a.m. Worship

VISTA EVANGELICAL COVENANT CHURCH
New Richland, Minnesota
Brian Schanil Pastor
Sunday - 10 a.m. Worship; 9 a.m. Sunday School
Tuesdays: The Shepherd's Robe Ministry, 1-3 p.m., 6-8 p.m.; Bonfires and Yard Games, 6 p.m. until dark

CROSS OF GLORY LUTHERAN
Hartland, Minnesota
Rev. Marcia Pedersen
Sunday - 10:30 a.m. Worship

Tuesday - Council meeting (First Tuesday) * * *
WEST FREEBORN LUTHERAN
Hartland, Minnesota
Rev. Marcia Pedersen
Sunday - 9 a.m. Worship
Monday - Council meeting (First Monday of the month)
Friday - Quilting meets 9:00 a.m. twice a month, see newsletter for dates.

* * *
HARTLAND EVANGELICAL LUTHERAN
Hartland, Minnesota
Pastor Phillip K. Lepak
Sunday - 10:30 a.m. Worship

* * *
MANCHESTER EVANGELICAL LUTHERAN
Manchester, Minnesota
Pastor Phillip K. Lepak
Sunday - 9 a.m. Worship

* * *
ALL SAINTS CATHOLIC CHURCH
New Richland, Minnesota
Father Glenn Frerichs
Friday - 10 a.m. on 1st, 3rd and 4th Fridays p.m. Mass
Sunday - Mass at 8 a.m.

* * *
COMMUNITY LUTHERAN
Geneva, Minnesota
Pastor Leandra Anderson
Sunday - 10 a.m. Worship (times vary for holidays)
Monday - 8:30 a.m. Quilting

* * *
SIMPLY CHURCH
105 Second Street North East
Geneva, Minnesota
Todd Lundgren, Pastor
Sunday - 9:30 a.m. Bible Study; 10:30 a.m. Worship

* * *
VIBRANT LIFE ASSEMBLY OF GOD CHURCH
Ellendale, Minnesota
Pastor David Modder
Sunday - 10 a.m. Worship; 10 a.m. Kids church
Check the website for additional updates

www.vibrantlifeag.com * * *
FIRST LUTHERAN LCMC
Ellendale, Minnesota
Lay Pastor Ross Sletten
Saturday - 8am Men's Bible Study
Sunday - 9am Worship
Monday - 7pm Call to prayer
Wednesday - 9:30am Bible Study; 6pm Confirmation

* * *
ELLENDALE UNITED METHODIST
Ellendale, Minnesota
Randy Cirkse, Pastor
Sunday - Summer Service time is 9:30 a.m. Worship; 9:15 a.m. Sunday school. (No summer Sunday school)
Worship is at 10:30 a.m. beginning after Sept. 3. Sunday School from Oct through May from 9:15 a.m. to 10:15 a.m. Food shelf is open every Thursday from 3:30 p.m. to 6:30 p.m.

* * *
CENTRAL FREEBORN LUTHERAN CHURCH
Pastor Matt Griggs
Sunday - 10:30 a.m. Worship
FM Transmitter is used for those wanting to listen through their car radios at FM 90.7

* * *
EAST FREEBORN LUTHERAN
Pastor Matt Griggs
Sunday - 8:30 a.m. Worship
FM Transmitter is used for those wanting to listen through their car radios at FM 89.3

* * *
FAMILY OF FAITH COMMUNITY CHURCH
Hollendale, Minnesota
Rev. Neal Ooms
Sunday - 8:45 a.m. Worship; 9:20 Worship and kids church (now an eagle brook viewing church)

* * *
ST. PAUL'S LUTHERAN CHURCH LCMS
Hollendale, Minnesota
Pastor Jesse Krusemark
Sunday - 9 a.m. Worship

FAMILY OF FAITH COMMUNITY CHURCH
Rev. Neal Ooms
101 East Park Avenue
Hollendale, Minnesota
Sunday - 9:30 a.m. Worship; 10:45 a.m. Sunday School

* * *
ZION LUTHERAN, ELCA
Rural Ellendale
Deacon Billie Jo Wicks
Sunday - 8:30 a.m. Worship

* * *
ST. PAUL'S LUTHERAN, ELCA
Meriden, Minnesota
Deacon Billie Jo Wicks
Sunday - 10 a.m. Worship

* * *
PONTOPIPIDAN LUTHERAN
Lemond Township
Pastor Gena Parker
Sunday - 10:15 a.m. Worship

* * *
FIRST LUTHERAN, LCMS
Hope, Minnesota
Pastor Sandy Miller
Sunday - 9 a.m. Worship; 10:15 a.m. Youth/Adult Study

* * *
FIRST BAPTIST CHURCH
Clarks Grove, Minnesota
Pastor James Cameron
Sunday - 9:15 a.m. Sunday School; 10:30 a.m. Worship

* * *
HOLY TRINITY CATHOLIC CHURCH OF LITOMYSL
Father Peter Schuster
Sunday - 8 a.m. Sacrament of Reconciliation; 8:30 a.m. Mass with Children's Church; Pre-school Sunday School during Mass
Wednesday - 6:30 p.m. - Faith Formation classes for grades K-Confirmation
www.litomysl.webs.com
www.stsidoreschool.webs.com

* * *
FIRST LUTHERAN
Missouri Synod
Waldorf, Minnesota
Rev. Larry Sipe, pastor
Sunday - 8 a.m. Worship; 9:10 a.m. Sunday School and Bible Study

ST. JOHN LUTHERAN
Minnesota Lake, Minnesota
Rev. Larry Sipe, pastor
Sunday - 9 a.m. Worship

* * *
ST. PAUL UNITED
Minnesota Lake, Minnesota
Interim Pastor
Sunday - 9:15 a.m. Sunday School; 10:30 a.m. Worship

* * *
PEACE UNITED CHURCH OF CHRIST
Minnesota Lake, Minnesota
Interim Pastor
Sunday - 9 a.m. Worship

* * *
IMMANUEL LUTHERAN CHURCH
Freedom Township
Rev. Larry Sipe, Pastor
Sunday - 9:15 a.m. Worship

* * *
ZOAR UNITED CHURCH OF CHRIST
Pastor Ava Adams-Morris
Waldorf, Minnesota
Sunday - 9 a.m. Worship

* * *
ST. JOSEPH'S CATHOLIC
Waldorf, Minnesota
Sunday - 8 a.m. Worship

* * *
TRINITY LUTHERAN
Wilton Township
Rev. Larry Sipe, Pastor
Sunday - 10:45 a.m. Worship

* * *
THE CHURCH OF JESUS CHRIST OF LATTER-DAY SAINTS
Brad Donner, Branch President
Waseca, Minnesota
www.lds.org
Sunday - 10 a.m. Sacrament Mtg.; 11:20 a.m. Sunday School
Wednesday - 7 p.m. Youth Activities, ages 12-18

* * *
NOTE: CHANGES IN CHURCH CALENDARS MUST BE MADE BY NOTIFICATION FROM A MEMBER OF THE CONGREGATION TO THE STAR EAGLE.

Steve's Meat Market
EST 1973
Award Winning Home-Cured Meat Products
Ellendale, MN 56026
PH: 507-684-2331
FAX: 507-684-3109

Your local family-owned store for Fresh Produce & Quality Meats, friendly service & great prices!
Wagner Foods
Mon-Sat: 8 am - 8 pm (507) 463-3717
Sun: 9 am - 5 pm
120 South Broadway
New Richland, MN
newrichlandgrocery.com

Bayview Freeborn
FUNERAL & CREMATION SERVICES
1415 Hwy 13N
Albert Lea, MN 56007
bayviewfuneral@gmail.com
507-373-4330
Locally Organized, Owned & Operated since 1939

JANIKE SEEDS
LAYNE JANIKE
(507) 995-6627
layne.janike@plantpioneer.com

NEW RICHLAND CARE CENTER
Exceptional care by and for Exceptional People!
(507) 465-3292
312 1st Street NE, New Richland, MN

L&D Ag Service
408 Broadway St,
Hartland, MN, 56042
(507) 845-2100
LD-AG.com

agro-economics inc.
MARK BERNARD
Crop Consultant
(507) 461-1775
121 3rd St. N.E.
New Richland, MN 56072

TS THOMPSON SANITATION, INC.
LOCALLY OWNED & OPERATED
RESIDENTIAL • COMMERCIAL
ROLLOFFS • RECYCLING
Clarks Grove Office:
108 N. Independence Ave.
Clarks Grove, MN 56016
Phone: 507-256-4370
thompsonsantiation.com

LOOKING BACK

25 years ago

- Duke University all-everything senior forward Shane Battier's string of honors was completed Monday night at the Metrodome as the top-ranking Blue Devils won their third championship with an 82-72 victory over Arizona. Battier, the grandson of Albert Lea native and Country Neighbors resident Amber Sorenson, enjoys a privileged position today and an impressive list of accomplishments.



- Tim Nelson of Vista Farms near New Richland was honored by Pioneer Hi-Bred International, Inc., for placing in the top 20% in the 2000 National Corn Growers Association Yield Contest Class AA Non-Irrigated. Mike Davis (right), Area Sales Manager for Pioneer Hi-Bred, presented the award to Nelson during Pioneer Champions Day held recently in Chanhassen. Nelson achieved a winning corn yield of 197.62 bushels per acre with Pioneer brand corn hybrid 34G81.

- Dustin Reese of New Richland has been accepted for admission at Bethany Lutheran College in Mankato. Founded in 1927, Bethany is a private residential liberal arts college. Dustin is the son of Jeff and Carol Reese of New Richland. Dustin is a 2001 graduate of New Richland-Hartland-Ellendale-Geneva High School.

- Shane Battier of Birmingham, Michigan, a senior at Duke University led his college team to victory in the finals of the NCAA basketball championship, Monday evening. His grandmother, Amber Sorenson formerly of Albert Lea, a resident at Country Neighbors, New Richland, has good reason to be proud of her grandson's accomplishments.



50 years ago

- Lisa Crumb, daughter of Mr. and Mrs. Richard Crumb of New Richland was selected last Thursday as NewRichland's Girl's State representative for the 1976 session to be held at St. Catherine's College, S. Paul from June 6-12. She is sponsored by the auxiliary unit of the Andrew Borgen Post 75 of the American Legion. Alternative is Stacie Jessen, daughter of Mr. and Mrs. Jim Jessen of New Richland.



- Dennis Rossell, left, Waldorf-Pemberton FFA chapter advisor received a plaque from the FFA members for his many years of dedicated service at the annual FFA banquet at Waldorf, Tuesday, April 6 at Waldorf. Robert Drager was DeKalb winner, Guy Ewald the Star Chapter Farmer and Jay Ewald, star Greenhand.

- Joe Solberg of Route 2, New Richland, received an award in the Cass County, Minnesota-Sawyer County, Wisconsin, Wisconsin Muskie Challenge '75 at the Minneapolis Sports Show, April 2. He was one of the "Top Ten Winners in the challenge.

- Wendy Urban of New Richland has joined the teaching staff of Northland Piano and Organ of Rochester, Albert Lea and Austin. Wendy will be teaching at the Oak Park Mall Store in Austin until the new studio, which is also in Austin, is completed.

75 years ago

- Richard Russell, weighing eight pounds, one ounce, arrived at the Westeca Memorial hospital Wednesday, May 2, born to Mr. and Mrs. Russell Shurson of near New Richland. This is their first child.

- Mr. and Mrs. L. M. Roseth have received word from Mr. and Mrs. Manual Mendoza (Elsie Roseth) of San Pedro, California, informing them of their recent marriage and their plans to visit her parents here, in a month.

GENERAC **HUNT ELECTRIC**
GENERATOR
Installation & Maintenance
CALL FOR A FREE QUOTE **507-923-2728**

Audien Hearing
The World's First Hearing Aids With Touchscreen Controls.
Atom X
No tiny buttons. No apps. No prescriptions.
Call **833-647-3293** to get your 45-day risk free trial.

LEGAL NOTICES

NOTICE OF MORTGAGE FORECLOSURE SALE

THE RIGHT TO VERIFICATION OF THE DEBT AND IDENTITY OF THE ORIGINAL CREDITOR WITHIN THE TIME PROVIDED BY LAW IS NOT AFFECTED BY THIS ACTION.

NOTICE IS HEREBY GIVEN: That default has occurred in the conditions of the following described mortgage:

DATE OF MORTGAGE: October 25, 2022

ORIGINAL PRINCIPAL AMOUNT OF MORTGAGE: \$201,286.00

MORTGAGOR(S): Rhett Warmsbecker, an unmarried man

MORTGAGEE: Mortgage Electronic Registration Systems, Inc., as nominee for American Pacific Mortgage Corporation

DATE AND PLACE OF FILING: Recorded on October 27, 2022 as Document Number A331902 in the Office of the County Recorder of Waseca County, Minnesota.

ASSIGNMENTS OF MORTGAGE: Assigned to: U.S. Bank National Association by assignment recorded on December 30, 2025 as Document Number A342247 in the Office of the County Recorder of Waseca County, Minnesota.

LEGAL DESCRIPTION OF PROPERTY: Lot 2, in R. P. Ward's Subdivision (B) of the NW 1/4 of the SE 1/4 of Section 18, Township 107 North, Range 22 West, Waseca County, Minnesota. PIN# 175900190.

STREET ADDRESS OF PROPERTY: 804 5TH ST SW, WASECA, MN 56093

COUNTY IN WHICH PROPERTY IS LOCATED: Waseca County, Minnesota.

THE AMOUNT CLAIMED TO BE

DUE ON THE MORTGAGE ON THE DATE OF THE NOTICE: \$204,111.64

TRANSACTION AGENT: Mortgage Electronic Registration Systems, Inc.

NAME OF MORTGAGE ORIGINATOR: American Pacific Mortgage Corporation

RESIDENTIAL SERVICER: U.S. Bank National Association

TAX PARCEL IDENTIFICATION NUMBER: 17.590.0190

TRANSACTION AGENT'S MORTGAGE IDENTIFICATION NUMBER: 1002793-0006824944-6

THAT no action or proceeding has been instituted at law to recover the debt then remaining secured by such mortgage, or any part thereof, or, if the action or proceeding has been instituted, that the same has been discontinued, or that an execution upon the judgment rendered therein has been returned unsatisfied, in whole or in part.

PURSUANT, to the power of sale contained in said mortgage, the above described property will be sold by the Sheriff of said county as follows:

DATE AND TIME OF SALE: June 04, 2026 at 10:00 AM.

PLACE OF SALE: Waseca County Sheriff's Office, 122 3rd Ave. NW, Waseca, MN 56093.

to pay the debt then secured by said mortgage and taxes, if any actually paid by the mortgagee, on the premises and the costs and disbursements allowed by law. The time allowed by law for redemption by said mortgagor(s), their personal representatives or assigns is six (6) months from the date of sale.

TIME AND DATE TO VACATE PROPERTY: Unless said mortgage is reinstated or the property redeemed, or unless the time for redemption is reduced by judicial order, you must vacate the premises by 11:59 p.m. on December 4, 2026.

THE TIME ALLOWED BY LAW FOR REDEMPTION BY THE MORTGAGOR, THE MORTGAGOR'S PERSONAL REPRESENTATIVES OR ASSIGNS, MAY BE REDUCED TO FIVE WEEKS IF A JUDICIAL ORDER IS ENTERED UNDER MINNESOTA STATUTES, SECTION 582.032, DETERMINING, AMONG OTHER THINGS, THAT THE MORTGAGED PREMISES ARE IMPROVED WITH A RESIDENTIAL DWELLING OF LESS THAN FIVE UNITS, ARE NOT PROPERTY USED IN AGRICULTURAL PRODUCTION, AND ARE ABANDONED.

MORTGAGOR(S) RELEASED FROM FINANCIAL OBLIGATION ON MORTGAGE: None

Dated: April 07, 2026

U.S. BANK NATIONAL ASSOCIATION
Mortgagee

TROTT LAW, P.C.

By: /s/ *N. Kibongni Fondungallah, Esq.*
Samuel R. Coleman, Esq.
Alexa Marsh, Esq.
Attorneys for Mortgagee
25 Dale Street North
St. Paul, MN 55102
(651) 209-9760
(26-0124-FC01)

Federal law may require reporting to the Financial Crimes Enforcement Network for certain purchases of residential property by entities or trusts. A successful third party bidder may be required to provide ownership and identifying information as a condition to completing the transfer.

THIS IS A COMMUNICATION FROM A DEBT COLLECTOR. Published in the NRHEG Star Eagle on April 9, 16, 23, 30, May 7 and 14, 2026

NOTICE OF MORTGAGE FORECLOSURE SALE

THE RIGHT TO VERIFICATION OF THE DEBT AND IDENTITY OF THE ORIGINAL CREDITOR WITHIN THE TIME PROVIDED BY LAW IS NOT AFFECTED BY THIS ACTION.

NOTICE IS HEREBY GIVEN: That default has occurred in the conditions of the following described mortgage:

DATE OF MORTGAGE: March 27, 2007

ORIGINAL PRINCIPAL AMOUNT OF MORTGAGE: \$65,650.00

MORTGAGOR(S): Glenn R. Vogler and Rita Vogler, husband and wife

MORTGAGEE: TCF National Bank n/k/a The Huntington National Bank successor by merger to TCF National Bank

DATE AND PLACE OF FILING: Recorded on April 13, 2007 as Document Number 270146 in the Office of the County Recorder of Waseca County, Minnesota.

ASSIGNMENTS OF MORTGAGE: Assigned to: Bayview Loan Servicing, LLC by assignment recorded on June 18, 2015 as Document Number A304271 in the Office of the County Recorder of Waseca County, Minnesota;

thereafter assigned to J.P. Morgan Mortgage Acquisition Corp. by assignment recorded on September 12, 2018 as Document Number A315757 in the Office of the County Recorder of Waseca County, Minnesota; thereafter assigned to Athene Annuity and Life Company by assignment recorded on May 12, 2021 as Document Number A326368 in the Office of the County Recorder of Waseca County, Minnesota.

LEGAL DESCRIPTION OF PROPERTY: Commencing at a point 66 feet East of the SE corner of Lot 2 of Auditor's Plat of the SE 1/4 of the SW 1/4 of Section 8, Township 107, Range 22, Waseca County, Minnesota thence running East a distance of 66 feet on a line parallel with the Northerly line of Fourth Ave. N.E. in the City of Waseca, Minnesota thence North a distance of 200 feet on a straight line parallel with the East line of said Lot 2, thence West in a straight line a distance of 66 feet thence South a distance of 200 feet to the place of beginning, according to the recorded plat thereof on file and of record in the office of the Register of Deeds in and for said county and state. Abstract property.

STREET ADDRESS OF PROPERTY: 709 4TH AVE NE, WASECA, MN 56093

COUNTY IN WHICH PROPERTY

IS LOCATED: Waseca County, Minnesota.

THE AMOUNT CLAIMED TO BE DUE ON THE MORTGAGE ON THE DATE OF THE NOTICE: \$64,494.74

TRANSACTION AGENT: None

NAME OF MORTGAGE ORIGINATOR: TCF National Bank n/k/a The Huntington National Bank successor by merger to TCF National Bank

RESIDENTIAL SERVICER: Nationstar Mortgage LLC, n/k/a Rocket Mortgage, LLC successor by merger to Nationstar Mortgage LLC

TAX PARCEL IDENTIFICATION NUMBER: 171200040

TRANSACTION AGENT'S MORTGAGE IDENTIFICATION NUMBER: None

THAT no action or proceeding has been instituted at law to recover the debt then remaining secured by such mortgage, or any part thereof, or, if the action or proceeding has been instituted, that the same has been discontinued, or that an execution upon the judgment rendered therein has been returned unsatisfied, in whole or in part.

PURSUANT, to the power of sale contained in said mortgage, the above described property will be sold by the Sheriff of said county as follows:

DATE AND TIME OF SALE: June 04, 2026 at 10:00 AM.

PLACE OF SALE: Waseca County Sheriff's Office, 122 3rd Ave. NW, Waseca, MN 56093.

to pay the debt then secured by said mortgage and taxes, if any actually paid by the mortgagee, on the premises and the costs and disbursements allowed by law. The time allowed by law for redemption by said mortgagor(s), their personal representatives or assigns is six (6) months from the date of sale.

TIME AND DATE TO VACATE PROPERTY: Unless said mortgage is reinstated or the property redeemed, or unless the time for redemption is reduced by judicial order, you must vacate the premises by 11:59 p.m. on December 4, 2026.

THE TIME ALLOWED BY LAW FOR REDEMPTION BY THE MORTGAGOR, THE MORTGAGOR'S PERSONAL REPRESENTATIVES OR ASSIGNS, MAY BE REDUCED TO FIVE WEEKS IF A JUDICIAL ORDER IS ENTERED UNDER MINNESOTA STATUTES, SECTION 582.032, DETERMINING, AMONG OTHER THINGS, THAT THE MORTGAGED PREMISES ARE IMPROVED WITH A RESIDENTIAL DWELLING OF LESS THAN FIVE UNITS, ARE NOT PROPERTY USED IN AGRICULTURAL PRODUCTION, AND ARE ABANDONED.

MORTGAGOR(S) RELEASED FROM FINANCIAL OBLIGATION ON MORTGAGE: None

Dated: April 08, 2026

ATHENE ANNUITY AND LIFE COMPANY
Mortgagee

TROTT LAW, P.C.

By: /s/ N. Kibongni Fondungallah, Esq.
Samuel R. Coleman, Esq.
Alexa Marsh, Esq.
Attorneys for Mortgagee
25 Dale Street North
St. Paul, MN 55102
(651) 209-9760
(26-0176-FC01)

Federal law may require reporting to the Financial Crimes Enforcement Network for certain purchases of residential property by entities or trusts. A successful third party bidder may be required to provide ownership and identifying information as a condition to completing the transfer.

THIS IS A COMMUNICATION FROM A DEBT COLLECTOR. Published in the NRHEG Star Eagle on April 16, 23, 30, May 7, 14, and 21, 2026

Garage Sale
21443 160th Street,
New Richland.
Large sale with household items, tools, antiques. April 23, 11 to 7: Friday April 24, 8 to 5: Sat., April 25, 8 to 3.

Johnson APARTMENTS
507-456-9514
Operating in Waseca, Steele, Freeborn Counties
johnsonrents.com

FOR RENT
Royal Villa Apartments has a one-bedroom apartment for rent. We are an income-based, clean, healthy, quiet place, with activities available for those looking for a place to call home. Secured building access and security system. Utilities included in rent. Satellite TV and Wifi available. Call 507-463-8515 or email hhrnr@hickorytech.net to request an application.

STATE OF MINNESOTA COUNTY WASECA

THIRD JUDICIAL DISTRICT DISTRICT COURT PROBATE DIVISION Court File No. 81-PR-26-79

Estate of LaVoy Gene Ebnet aka LaVoy G. Ebnet Decedent

NOTICE AND ORDER OF HEARING ON PETITION FOR PROBATE OF WILL AND APPOINTMENT OF PERSONAL REPRESENTATIVES AND NOTICE TO CREDITORS

It is Ordered and Notice is given that on May 6, 2026, at 10:30 A.M., a hearing will be held, in this Court at 307 North State Street Waseca, Minnesota, for the formal probate of an instrument purporting to be the Will of the Decedent dated, June 4, 2014, ("Will"), and for the appointment of **Vianna Bohlen, 1115 Sunnydale Ln SE, Owatonna, MN 55060** as Personal Representative of the Estate of the Decedent in an UNSUPERVISED □ SUPERVISED administration. Any objections to the petition must be filed with the Court prior to or raised at the hearing. If proper and if no objections are filed or raised, the Personal Representative will be appointed with full power to administer the Estate, including the power to collect all assets, to pay all legal debts, claims, taxes and expenses, to sell real and personal property, and to do all necessary acts for the Estate. Please see Notice of Remote Hearing.

Notice is also given that (subject to Minnesota Statutes section 524.3-801) all creditors having claims against the Estate are required to present the claims to the Personal Representative or to the Court Administrator within four months after the date of this Notice or the claims will be barred.

BY THE COURT
Dated: 03/25/26, 10:49:18 /s/Carol M. Hanks

Judge of District Court Shannon Asselin Court Administrator Byron Law Office, PLLC Molly Byron MN# 0163843 122 North State St. Waseca, MN 56093 Telephone:507-835-3355 Fax:507-835-3303 Published in the Star Eagle April 16 and 23, 2026

BUSINESS AND PROFESSIONAL DIRECTORY

| | | | | | |
|--|--|---|---|---|---|
| <p>JENSEN'S PLUMBING, HEATING & COOLING</p> <p>Serving Southern Minnesota for over 45 years!</p> <p>104 CENTRAL AVE N GENEVA, MN 507-256-4712</p> | <p>ROY THOMPSON AGENCY, INC.</p> <p>1330 W. Main, Albert Lea, MN 507-377-2852 fax 507-377-3301 troythompsonagency@gmail.com</p> | <p>Hope CREAMERY</p> <p>9043 SW 37th Ave. • Hope, MN 507-684-2019</p> | <p>ELEMENTIC CONCRETE</p> <p>Your local distributor EAGLE CONCRETE Division of Waseca Sand & Gravel 13113 315th Ave, Waseca MN 507-835-5150 Also available: Ready Mix Concrete, Rebar, Landscape Rock</p> | <p>Bohler Plumbing & Heating</p> <p>TRANE It's Hard To Stop A Trane!</p> <p>324 N Broadway • New Richland 507-465-8376 Rick 507-402-6706 • James 507-475-2430</p> | <p>ARO ACCOUNTING</p> <p>Allyson Olson cell 507-391-3738 allyson@arocounting.com</p> <p>Two locations to serve you 217 East Elm Ave, Waseca 507-391-3738 32718 State Hwy 13, Hartland 507-845-2763</p> |
| <p>Holland Auction Holland & Associates Ellendale, MN Tracy Holland #7405002 MSAA 507-456-5128 www.hollandauction.com</p> | <p>Bayview Freeborn FUNERAL & CREMATION SERVICES</p> <p>1415 Hwy 13N Albert Lea, MN 56007 bayviewfuneral@gmail.com 507-373-4330</p> <p>Locally Organized, Owned & Operated since 1939</p> | <p>INSURE CAREFULLY. DREAM FEARLESSLY.</p> <p>CALL (507) 835-2770 FOR A NO-OBLIGATION FREE QUOTE.</p> <p>Matthew R. Petsinger Agency, LLC Matthew Petsinger, Agent Waseca, MN teampetsinger@amfam.com mrapagencyllc.com</p> | <p>JK ROUTH CONTRACTING, LLC</p> <p>Wick Buildings Jesse Routh 507-383-7892 jrouthbod@yahoo.com</p> | <p>PANTHER POWERHOUSE</p> <p>24-Hour Gym Access New Member signup by appointment 114 Broadway Ave. N. Call or text (507)330-2345 Facebook address: https://www.facebook.com/PantherPowerHouseFitness</p> | <p>Red Leaf Cafe Open Monday-Friday 6am-2pm</p> <p>104 Broadway Ave. S. • Downtown New Richland 507-465-8000</p> |

Community Health on the Rise: year two progress

Waseca, Minn. – The Le Sueur-Waseca Community Health Board has released its Year Two Community Health Improvement Plan (CHIP) report, highlighting progress in mental health and substance use across both counties. New data from the 2025 Minnesota Student Survey show decreases in Adverse Childhood Experiences (ACEs) and substance use among local youth.

Key highlights include: Seven trained presenters now offer community education on ACEs and early trauma

More than 5,000 mental health resources shared across the community

First mental health resource fair connected 25 providers with over 100 residents

Over 300 residents participated in community surveys on substance use

Local Opioid Advisory Committees used data to guide funding and policy decisions

More than 60 residents shared input through a community cannabis survey

Public Health expanded education on ACEs by training local presenters and offering community sessions. These efforts help residents understand how early experiences impact long-term health. In the coming year, additional training on protective factors will provide practical tools to support children and families.

Access to mental health resources also increased. Information was shared at community events, partner meetings, and public spaces. The first mental health resource

fair helped connect residents with local services and support.

Efforts around substance use focused on gathering community input and using data to guide decisions. Survey results showed strong support for prevention, treatment, and recovery services. This information is now helping shape local policies and funding priorities. Public Health also created county-specific webpages with data and resources related to substance use and overdose prevention.

Additional work included reviewing school and local policies, supporting student survey participation, and gathering community feedback on cannabis and tobacco-related issues. A public awareness campaign also shared information about substance use and available resources.

“The progress we are seeing is the result of strong local partnerships and a shared commitment to healthier communities,” said Colin Ayers, Le Sueur-Waseca Public Health Educator/Planner. “By using data, education, and community input, we are making meaningful progress in supporting mental health and preventing substance use.”

In Year Three, Public Health and partners plan to expand trainings, improve access to mental health resources, and continue using data to guide prevention efforts.

For more information, contact Waseca County Public Health at 507-835-0685 or visit www.wasecacounty.gov/130/PUBLIC-HEALTH.

Good Steward Consulting celebrates a decade

Good Steward Consulting, a leading provider of public outreach and community engagement services for utility-scale renewable energy developments and transmission, is proud to celebrate its 10-year anniversary.

Founded in 2016, the company has grown from a single-person operation into a team of 32 full-time professionals supporting projects across the United States. Over the past decade, Good Steward Consulting has established itself as a trusted partner in helping communities and stakeholders navigate the development of renewable energy infrastructure.

Since its founding, the company has achieved consistent year-over-year growth, expanded its national footprint, and maintained strong financial performance. Notably, Good Steward Consulting has never posted a loss and has operated without outside financing, including during periods of economic uncertainty such as the COVID-19 pandemic.

To date, the firm has supported projects representing over 26 gigawatts of energy, worked across more than 20 states, engaged with 115 rural communities, and assisted more than 5,450 landowners and farm families nationwide.

“Our focus from the beginning was to build a company that could meet the needs of communication in rural environments, ensuring that renewable energy projects and infrastructure effectively communicate with their host communities to

preserve the right for farmers to participate in energy production,” said Mariah Lynne, CEO/Founder. “Reaching this milestone is a direct reflection of our team’s commitment and the values we bring to our work every day.”

The company’s culture is grounded in its core values—Grit, Resolve, Accountability, Creativity,

and Energy (GRACE)—which guide its approach to client service and community engagement.

As demand for renewable energy and transmission continues to grow nationwide, Good Steward Consulting remains committed to supporting thoughtful, transparent engagement processes that help

communities and landowners make informed decisions and move forward with confidence.

“This milestone is not just about looking back—it’s about continuing to build for the future,” added Lynne. “We are proud of what we’ve accomplished and excited for what lies ahead.”

You are cordially invited to the 2026 Annual Meeting of **Bayview/Freeborn Funeral Home** Celebrating our 87th Year in Business **Saturday, April 25, 2026 - 10:30 am** (doors open at 10:00 am) **Bayview Freeborn Funeral Home** 1415 Hwy 13 N, Albert Lea, for the following purpose: **1) To hear the report of officers 2) To elect Directors 3) To transact such other business as may legally come before said meeting**

There will be a short program. Assistant Manager/CFO Beth Tuberty and Board Vice President John Jurgenson will speak. The program will be live-streamed via Bayview/Freeborn Funeral Home's YouTube page. A link to the page will be available on the Bayview/Freeborn Funeral Home website. Following the program, we invite you to visit with our Board Members and Staff and join us for a meal and fellowship.

PUBLIC INVITED

Please join us for a brief meeting, lunch and fellowship. RSVP appreciated but not required by calling 507-373-4330 or email bayviewfuneral@gmail.com



BOARD OF DIRECTORS

John Jurgensen, Pat Dillavou, David Thunstedt, David Paschka, John Chrz, Norm Fredin, Kathleen Muilenburg, Brian Thompson

(507) 455-0388
870 32nd Avenue NW
Owatonna, MN 55060
Serving Commercial & OTR Customers Since 1979



507-461-9615 • ricksappliancewaseca.com

Rick's Appliance

Hours
M-F 7:00 AM - 5:30 PM
Sat 7:00 AM - 2:00 PM
Sunday Closed

CUSTOMER APPRECIATION DAY

SNACKS & GREAT DEALS! SATURDAY, APRIL 18th • 9 AM - 2 PM

